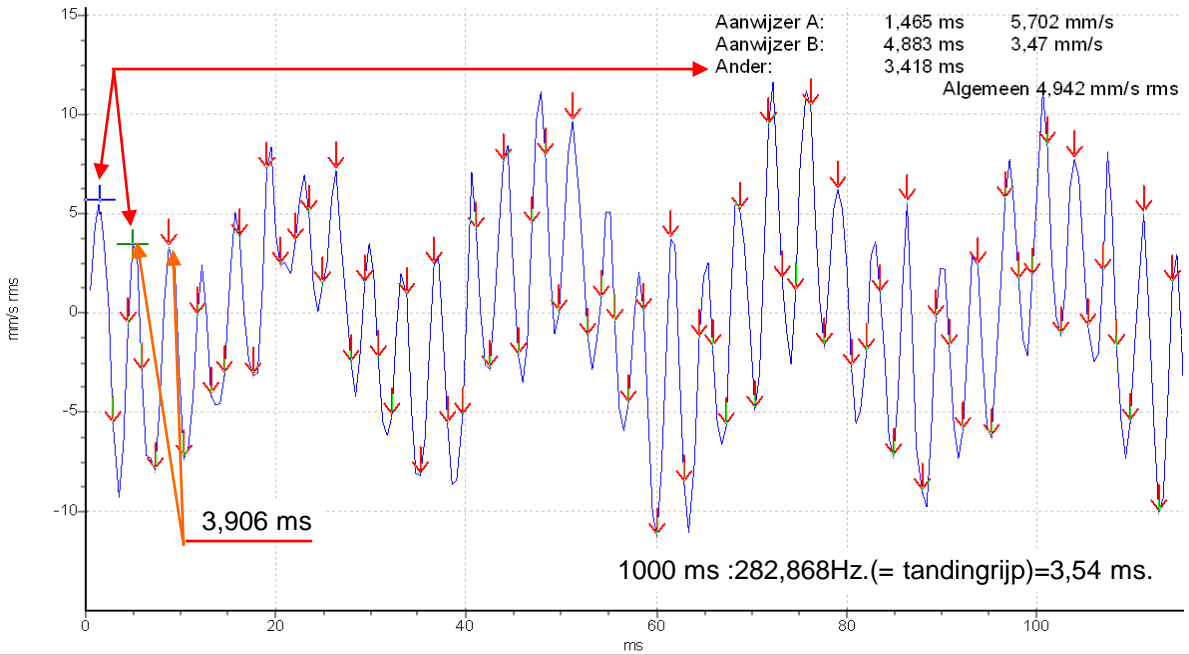


# torsietrilling

haaks unit 1 - rondsel - Horizontaal - Snelh Tijd 4000 ms  
6-2-2003 8:24:44



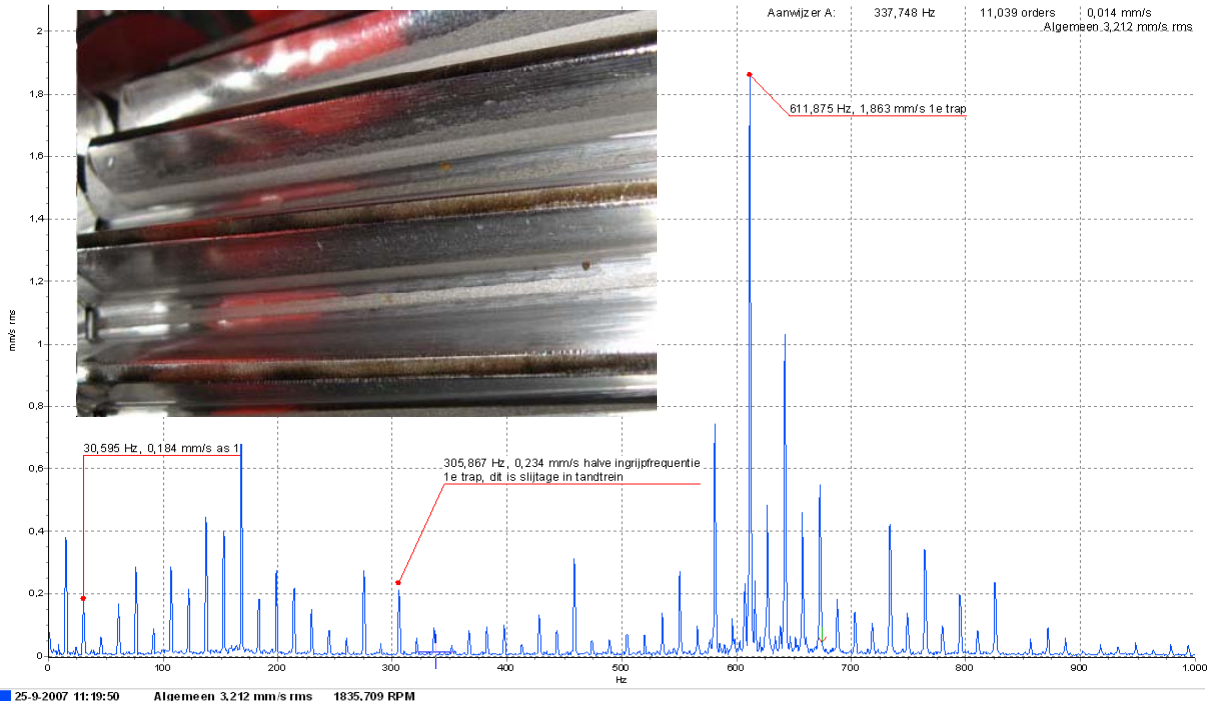
6-2-2003 8:24:44 Algemeen 4,942 mm/s rms <stel TPM in>





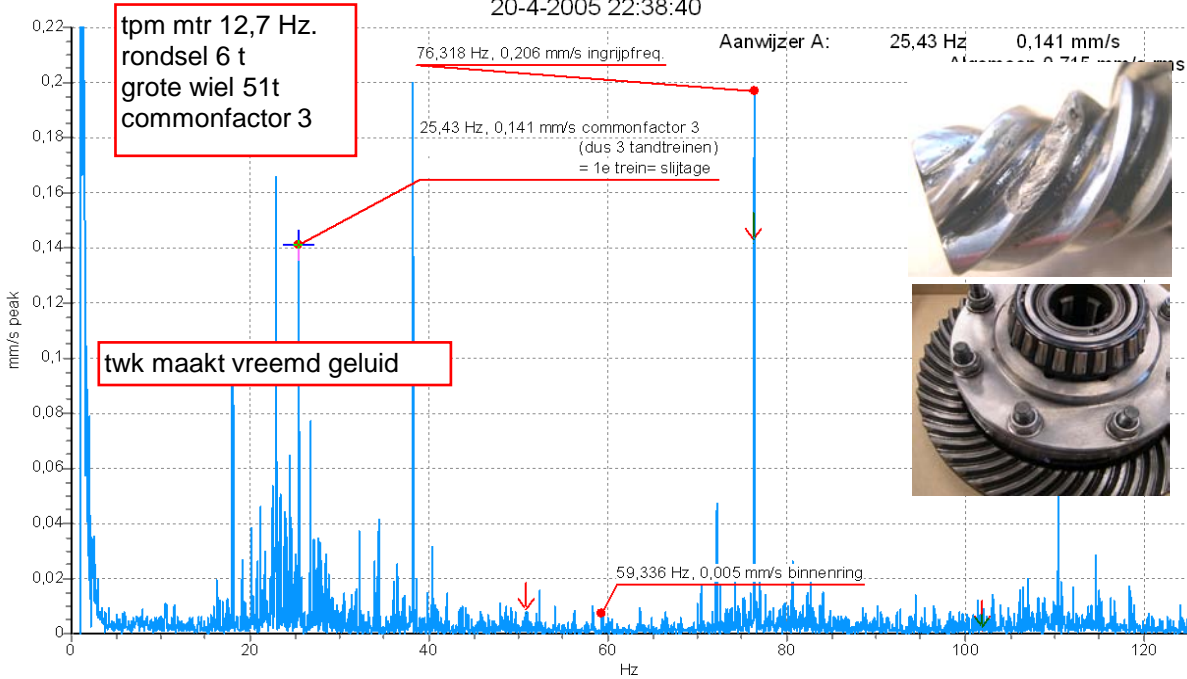
Mobiel Technische Dienst

pomp 1 - As1 VZ - Verticaal - Snelh Freq 1000 Hz  
25-9-2007 11:19:50



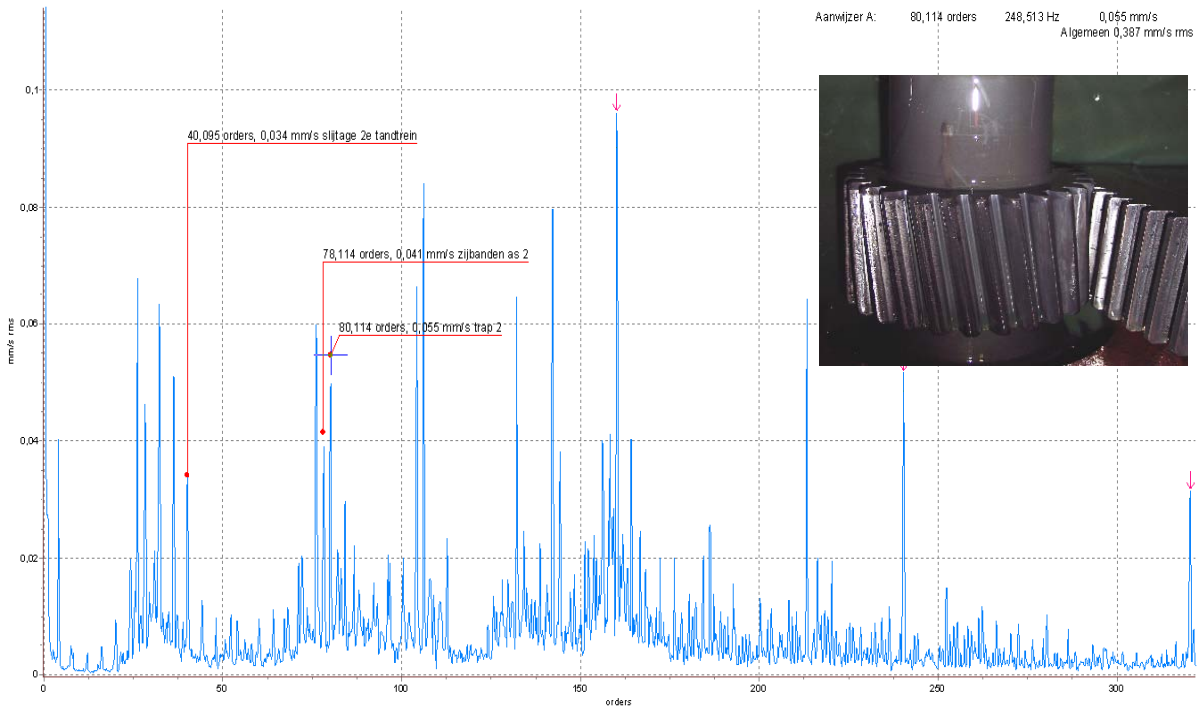


121 voor - TWK R - Verticaal - Snelh Freq 125 Hz  
20-4-2005 22:38:40



20-4-2005 22:38:40 Algemeen 0,715 mm/s rms <stel TPM in> <opmerking bijvoegen>

motor+3traps twk - As 2 AZ - Verticaal - Snelh Freq 1000 Hz  
6-12-2007 13:24:23



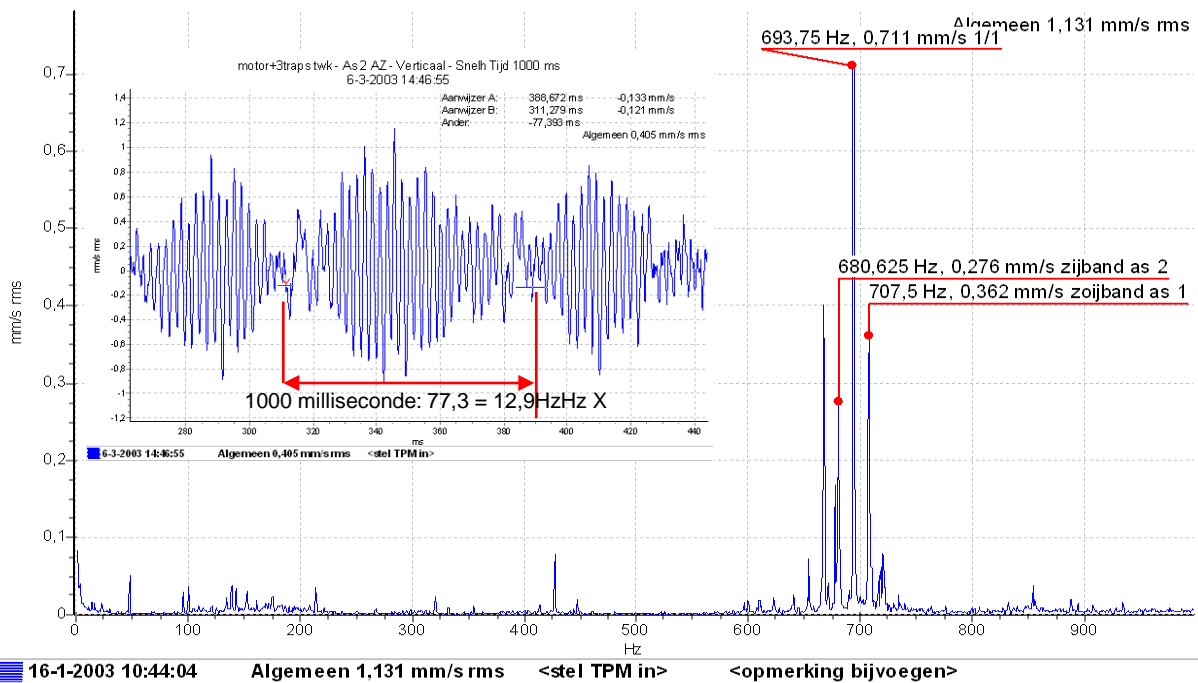
6-12-2007 13:24:23 Algemeen 0,387 mm/s rms 186,119 RPM



3 oud - As 3onder - Horizontal - Versn Freq 500 Hz  
30-6-2003 9:12:02

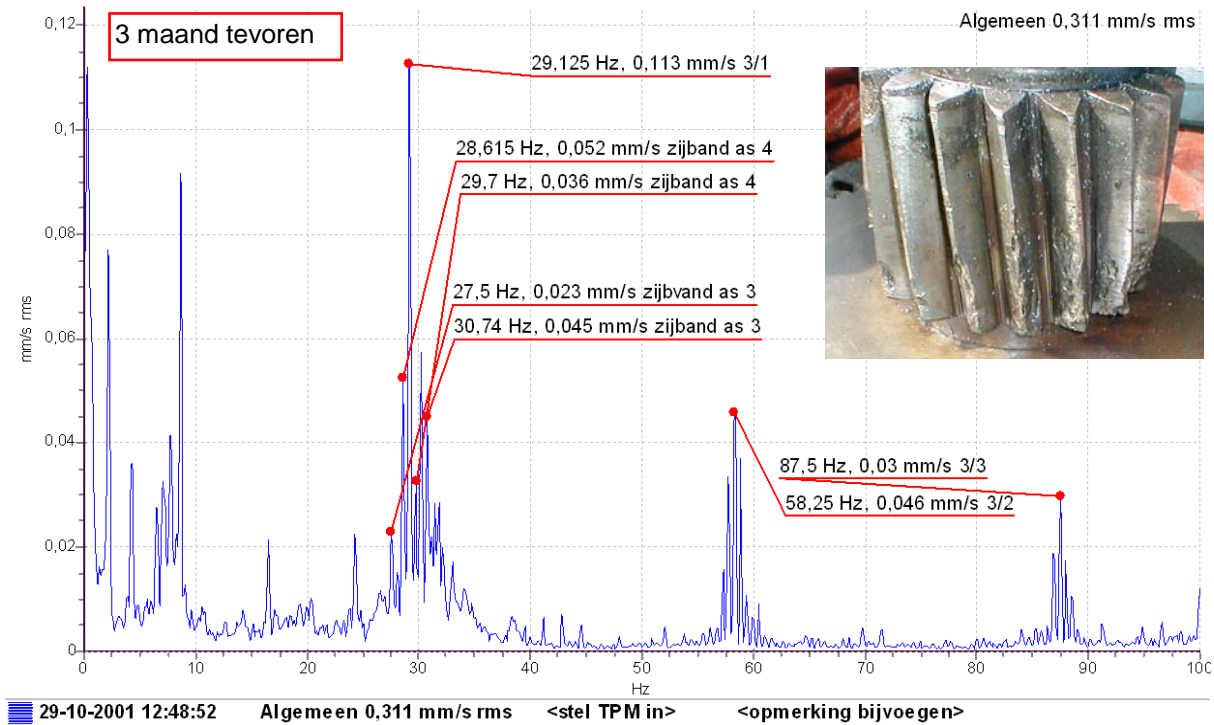


motor+3traps twk - As1 WZ - Verticaal - Snelh Freq 1000 Hz  
16-1-2003 10:44:04





almere P1321 - P1321 - As 4boven - Horizontal - Snelh Freq 100 Hz  
29-10-2001 12:48:52



A slibverwerkinggebouw - 2231versnijder - MWZ - Verticaal - Snelh Freq 1000 Hz  
13-6-2002 12:29:53

