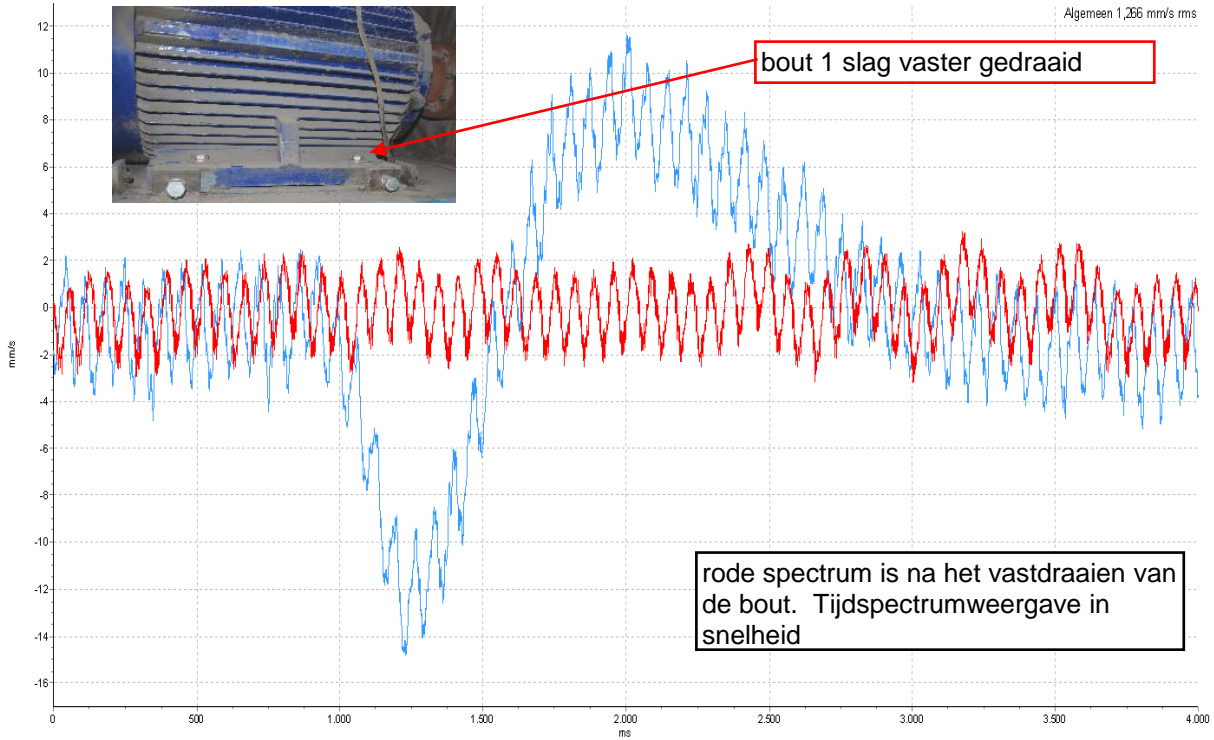




HNF10AN001 - MAZ - Horizontaal - Snelh Tijd 4000 ms

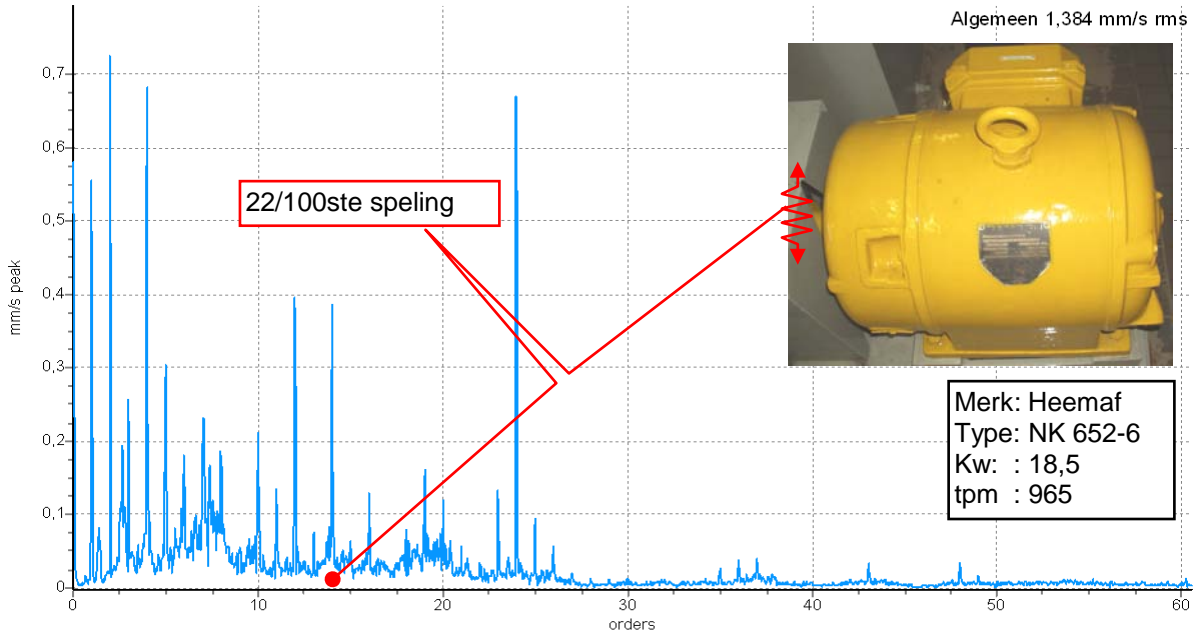
Algemeen 1,266 mm/s rms



25-7-2008 13:40:16	Algemeen 1,266 mm/s rms	<stel TPM in>
25-7-2008 13:12:54	Algemeen 4,672 mm/s rms	<stel TPM in>

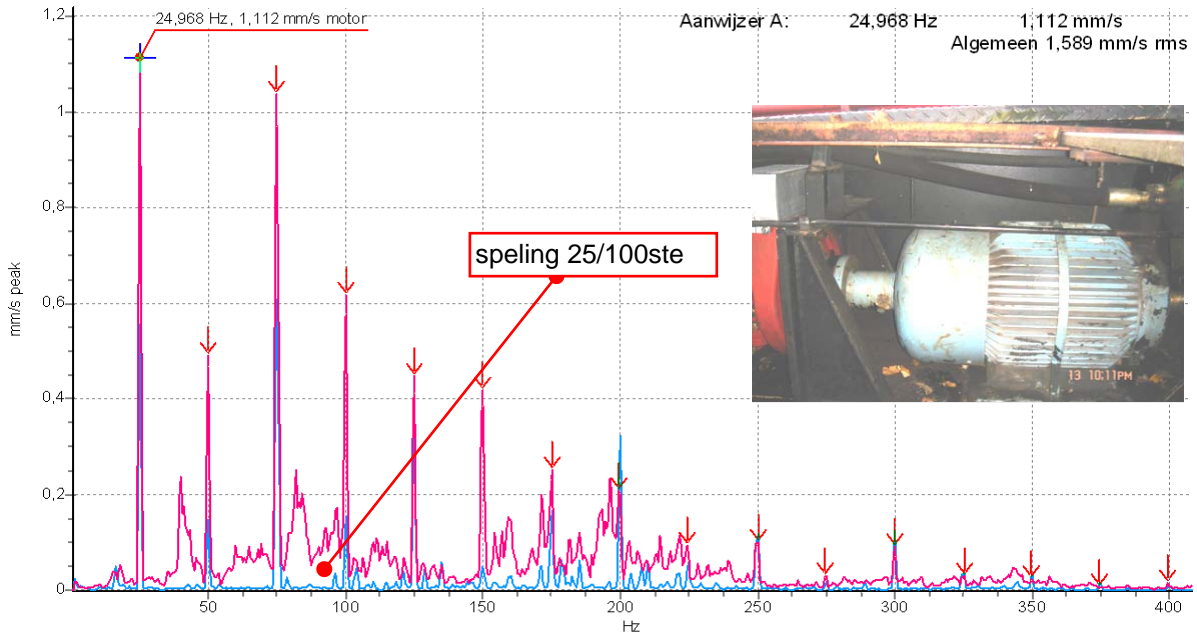


motor 3 vacuüm - MAZ - Verticaal - Snelh Freq 1000 Hz
24-10-2006 11:50:48



24-10-2006 11:50:48 Algemeen 1,384 mm/s rms 991,005 RPM <opmerking bijvoegen>

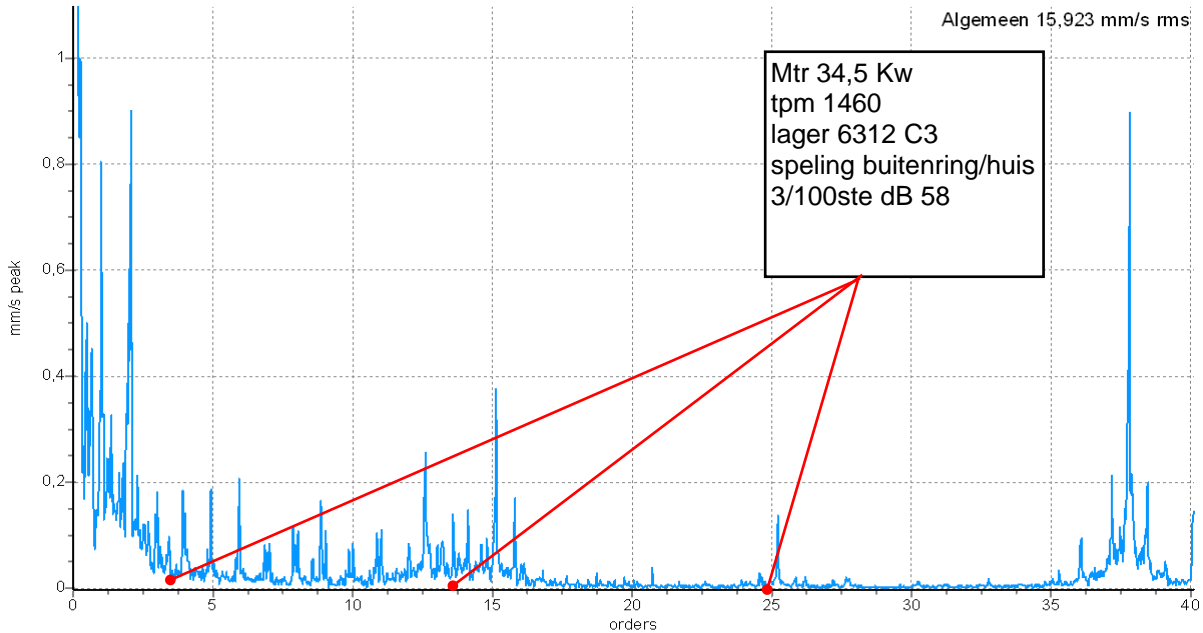
G Force - MAZ L - Horizontaal - Snelh Freq 1000 Hz



31-10-2006 12:39:27 Algemeen 1,589 mm/s rms <stel TPM in> <opmerking bijvoegen>
 14-11-2005 9:31:14 Algemeen 0,772 mm/s rms <stel TPM in> <opmerking bijvoegen>

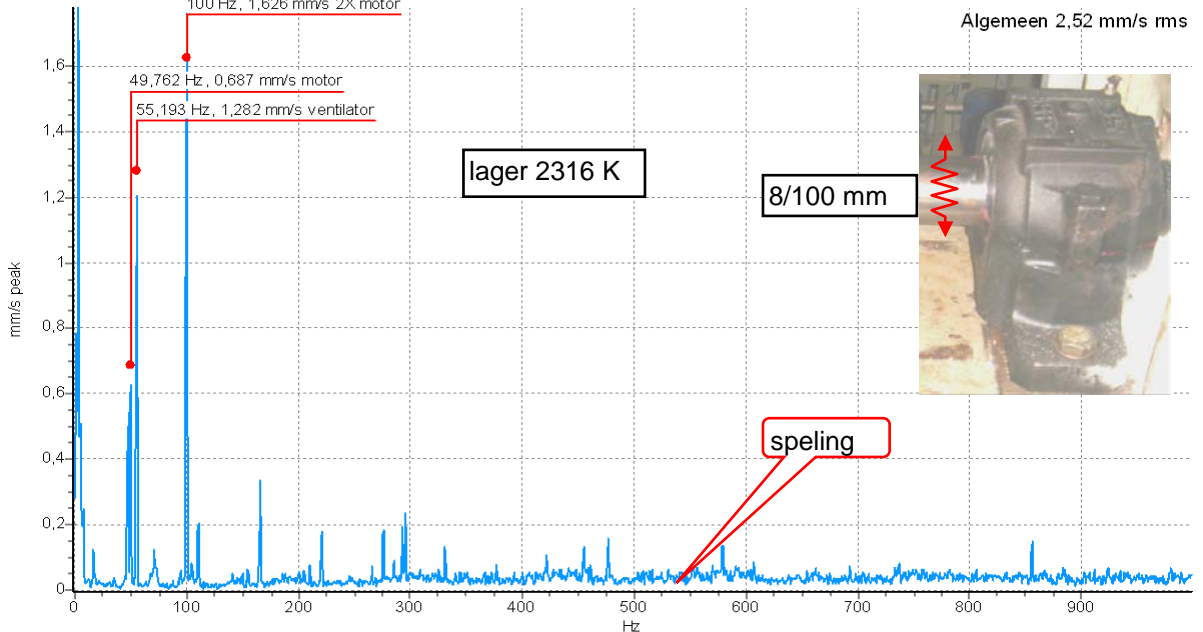


Unit 2 - MWZ - Verticaal - Snelh Freq 1000 Hz
8-8-2006 10:53:22



8-8-2006 10:53:22 Algemeen 15,923 mm/s rms 1496,082 RPM <opmerking bijvoegen>

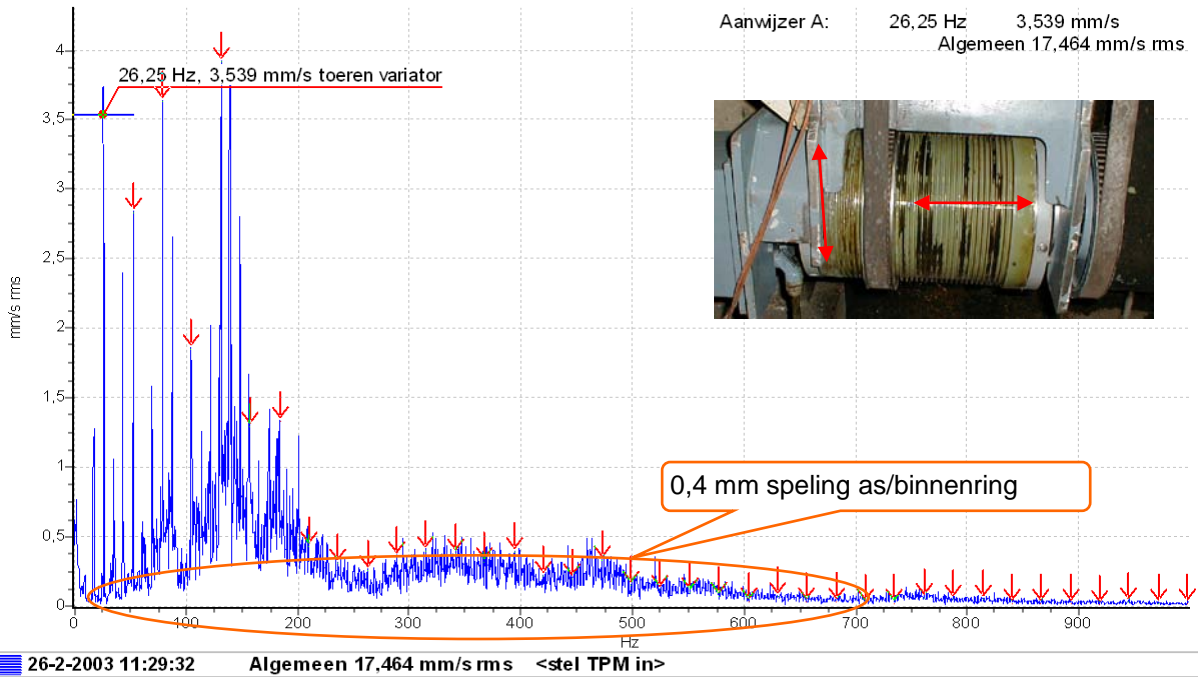
Rotaclean vent. - As WZ - Verticaal - Snelh Freq 1000 Hz
28-9-2006 13:05:56



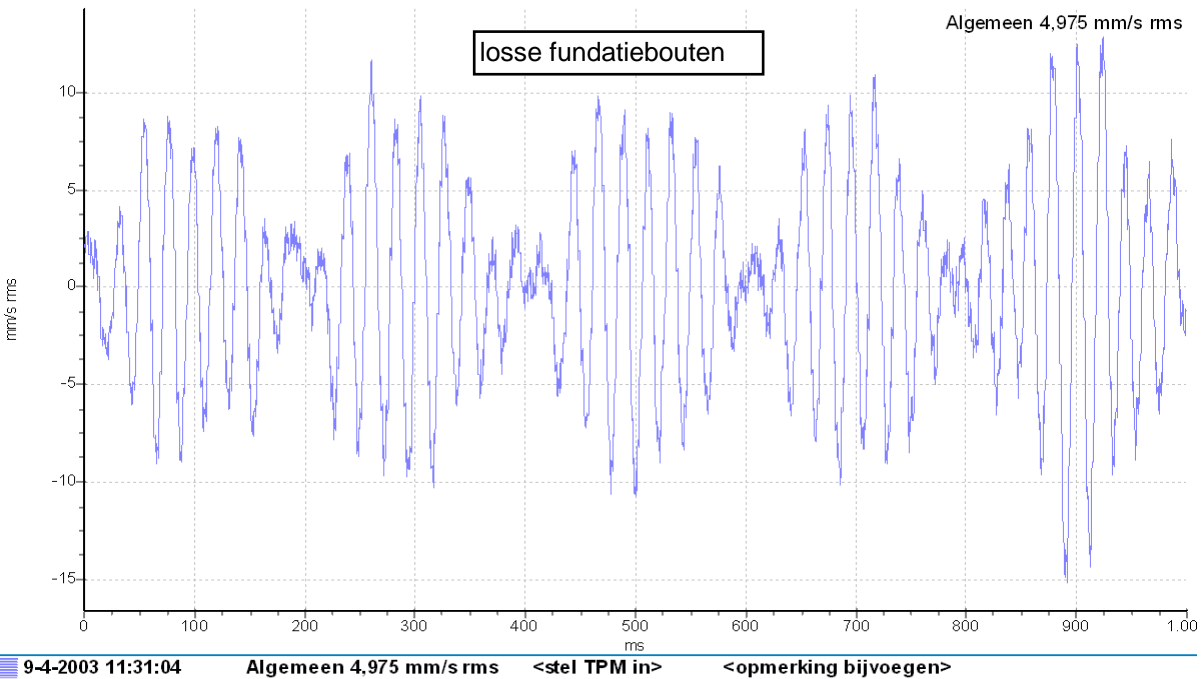
28-9-2006 13:05:56 Algemeen 2,52 mm/s rms <stel TPM in> <opmerking bijvoegen>



Dekanter 2 - Remmotor dek zij - Verticaal - Snelh Freq 1000 Hz
26-2-2003 11:29:32

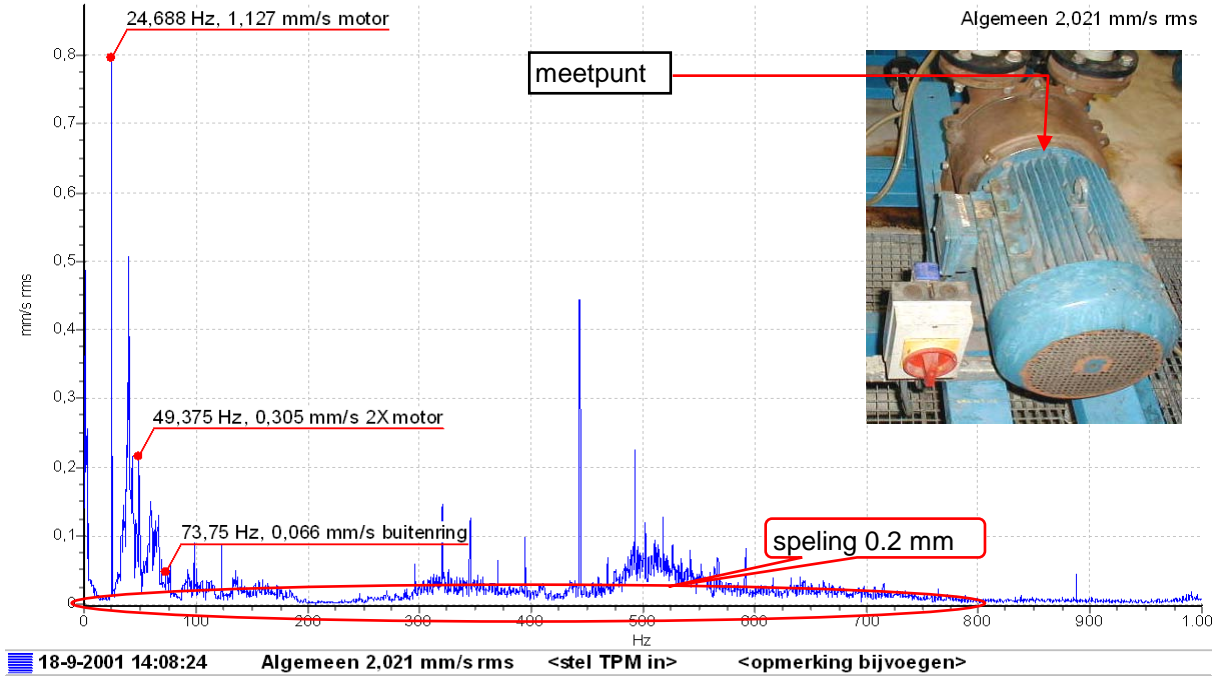


FRIKI condensors - MWZ - Verticaal - Snelh Tijd 1000 ms
9-4-2003 11:31:04





VC102 ASO 22 - MAZ - Verticaal - Snelh Freq 1000 Hz vacuumpomp
18-9-2001 14:08:24



Apeldoorn - Depanner - As WZ - Verticaal - Snelh Freq 1000 Hz
5-4-2002 11:43:03

