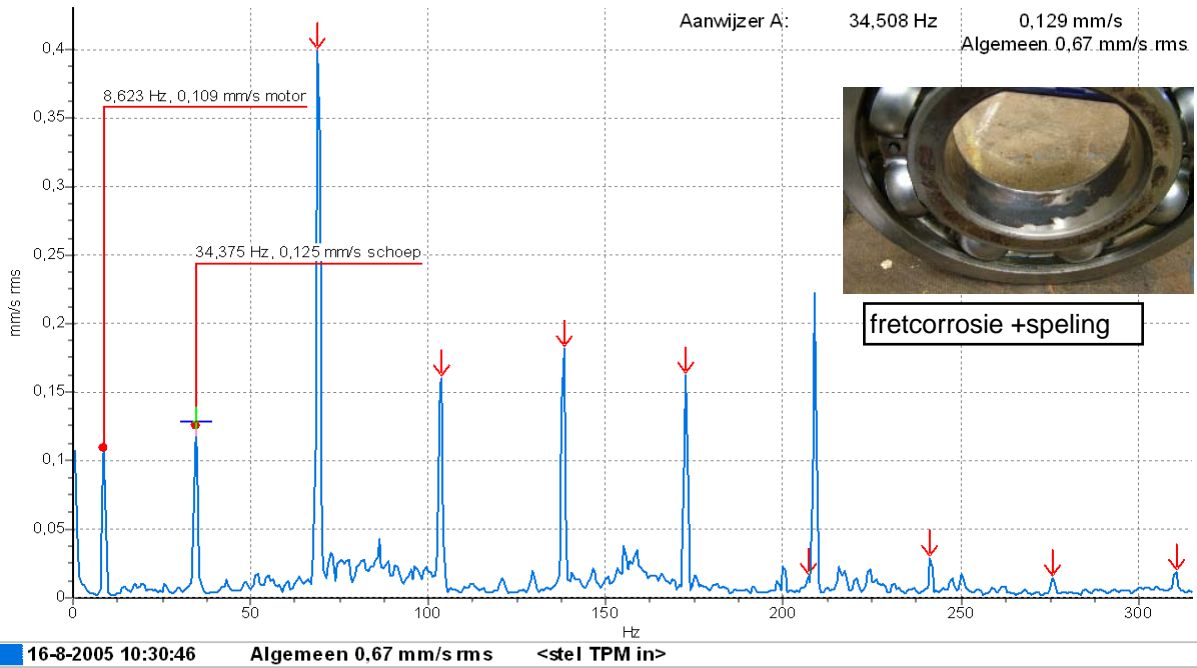
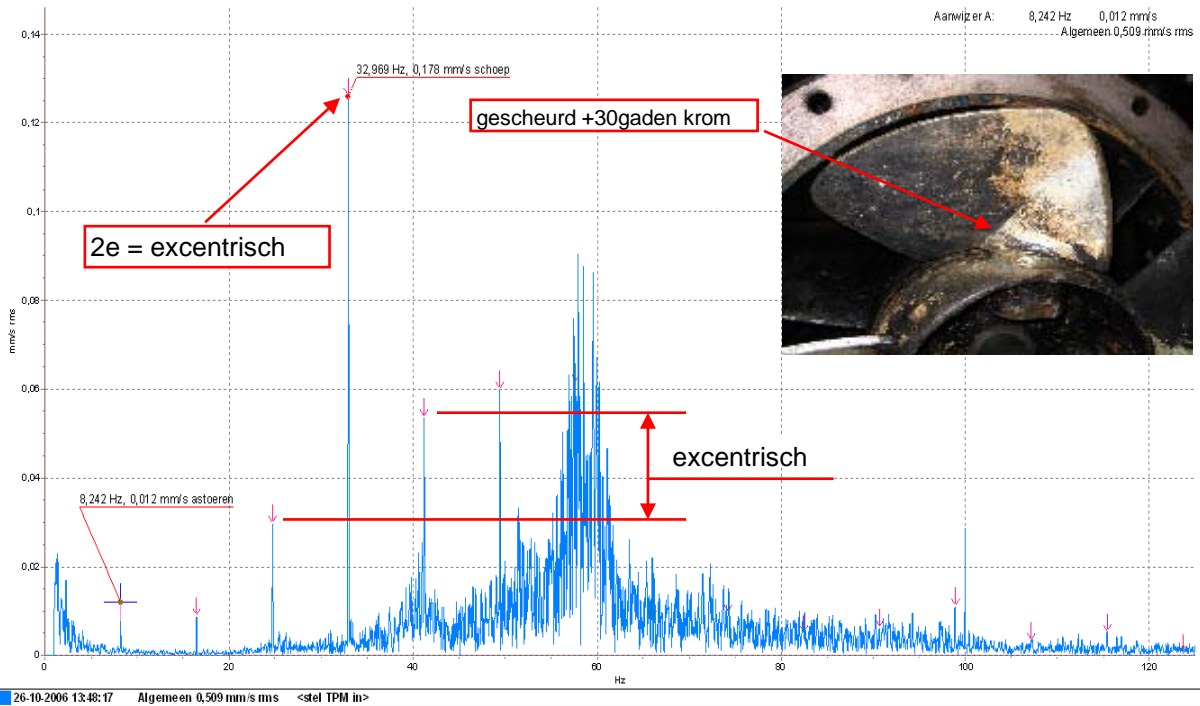




Pomp 1 - Pomp Onderlager - Verticaal - Snelh Freq 1000 Hz
16-8-2005 10:30:46

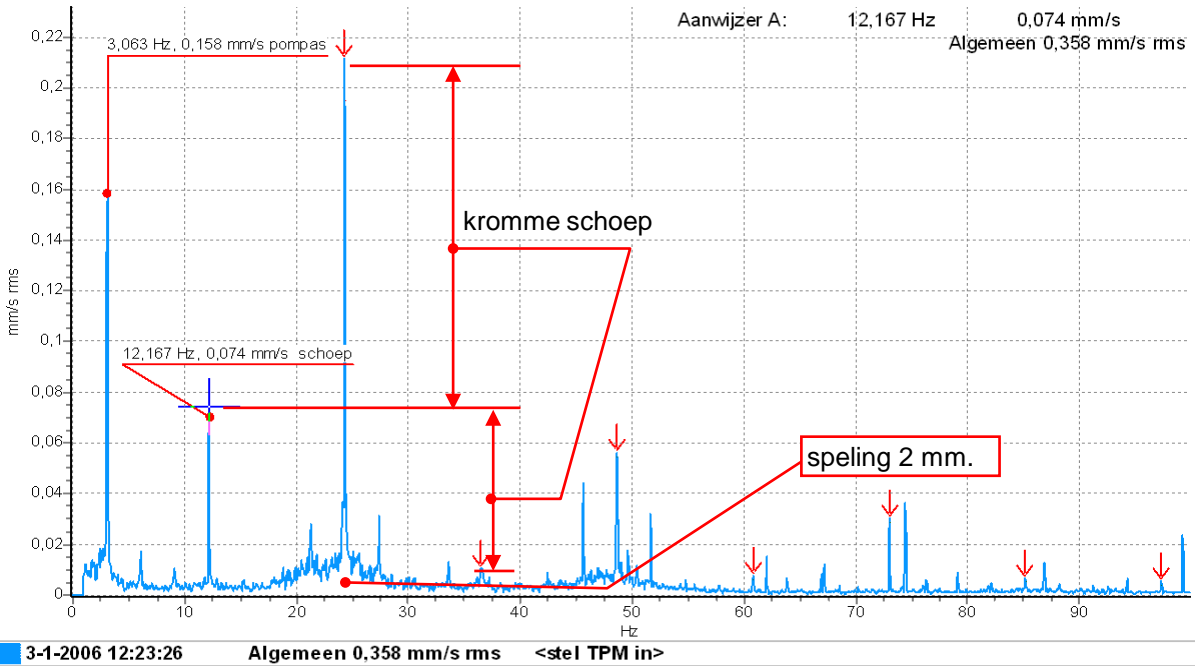


motor - Pomplager - Axiaal - Snelh Freq 125 Hz
26-10-2006 13:48:17





Pomp 4 - Pomkp onder - Verticaal - Snelh Freq 100 Hz
3-1-2006 12:23:26



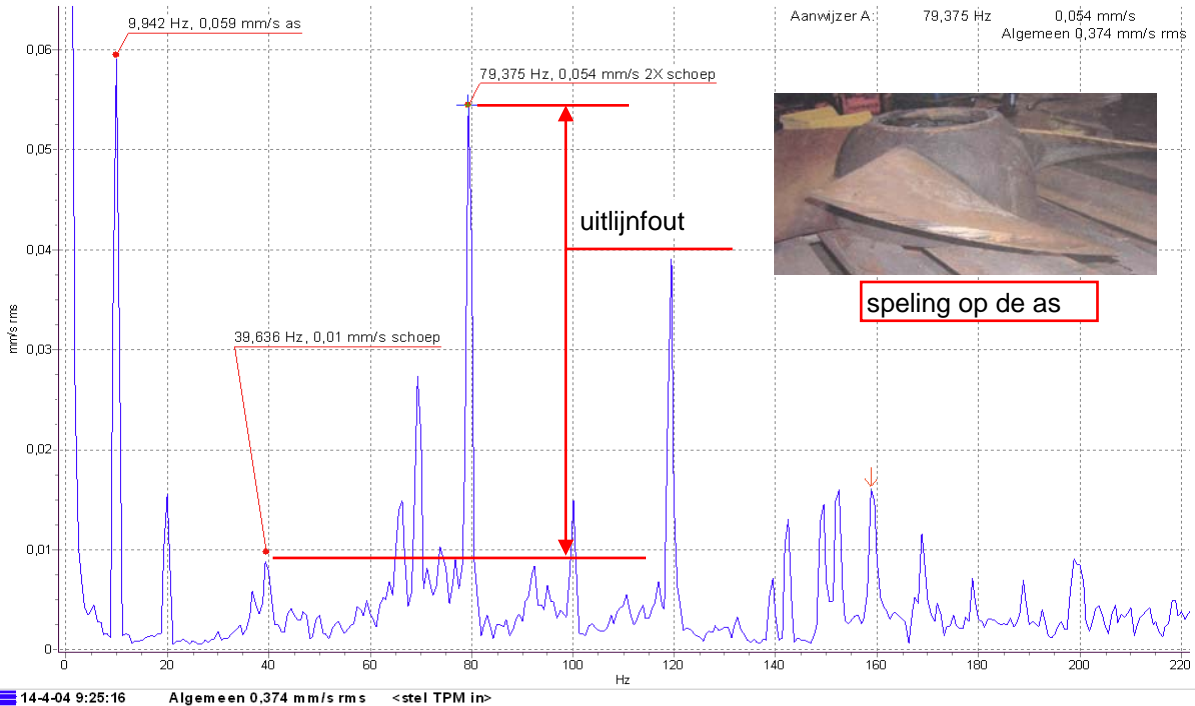
Pomp 4 - Pomkp onder - Verticaal - Snelh Freq 100 Hz

Algemeen 0,358 mm/s rms

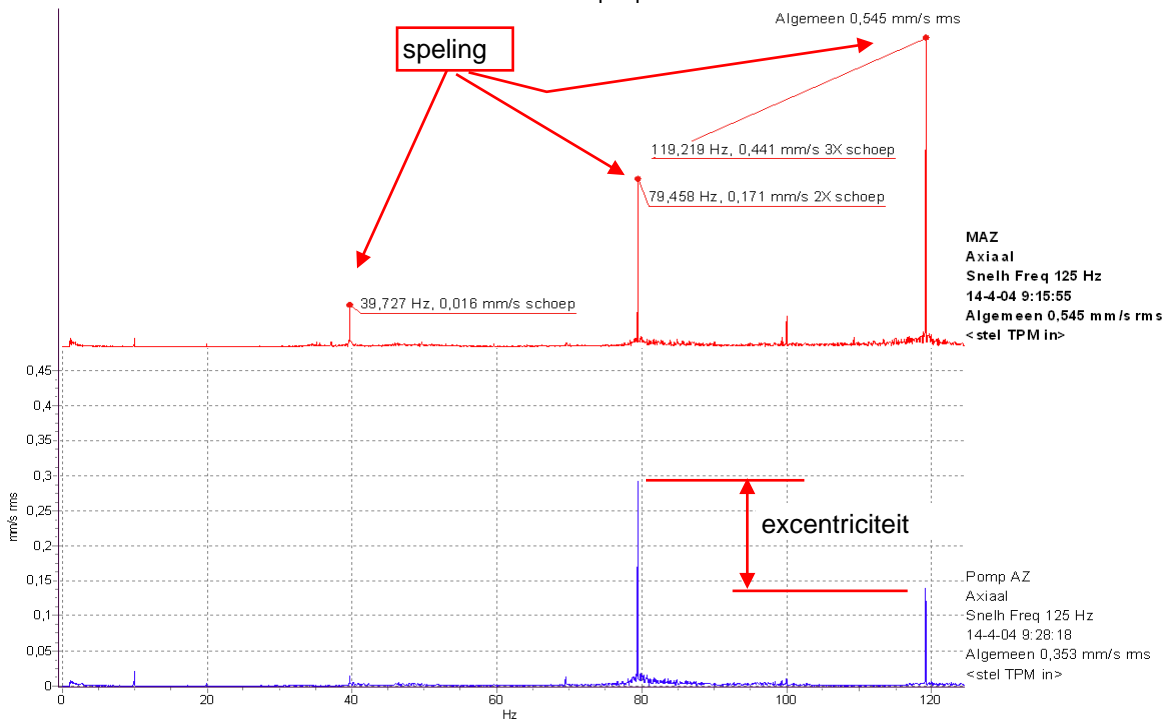


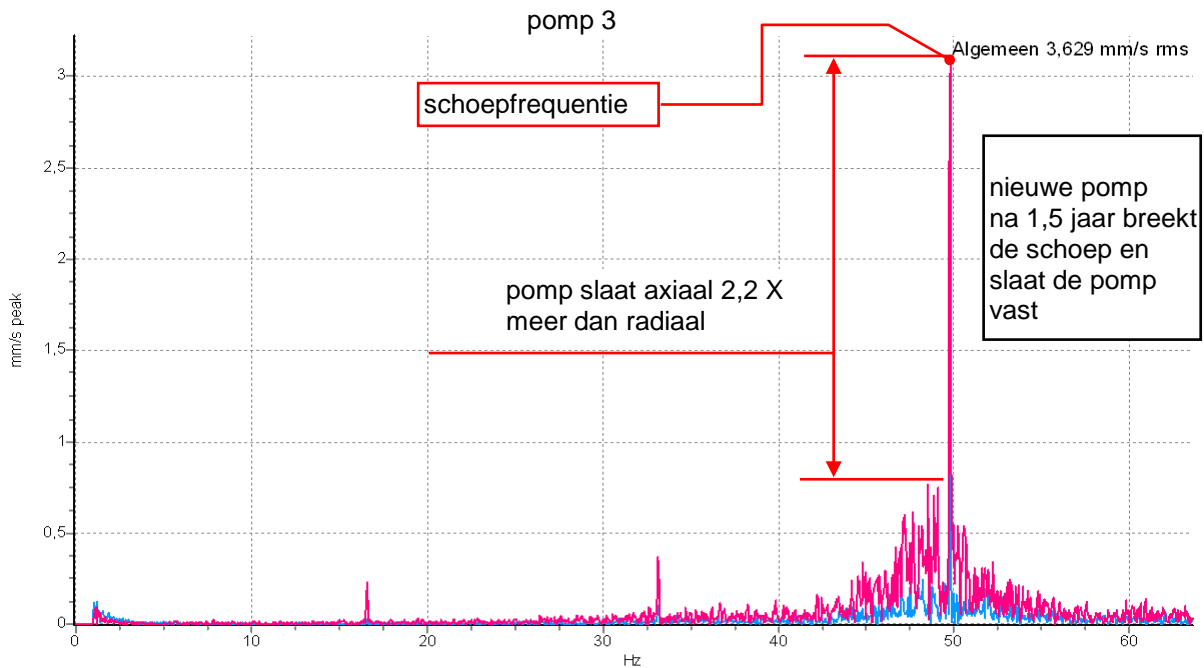


motor + pomp 1 - Pomp AZ - Verticaal - Snelh Freq 1000 Hz
14-4-04 9:25:16



motor + pomp 1





Pomp AZ	Axiaal	Snelh Freq 125 Hz	14-2-2006 10:59:03	Algemeen 3,629 mm/s rms	<stel TPM in>
Pomp WZ	Verticaal	Snelh Freq 125 Hz	14-2-2006 11:00:19	Algemeen 1,435 mm/s rms	994,891 RPM

