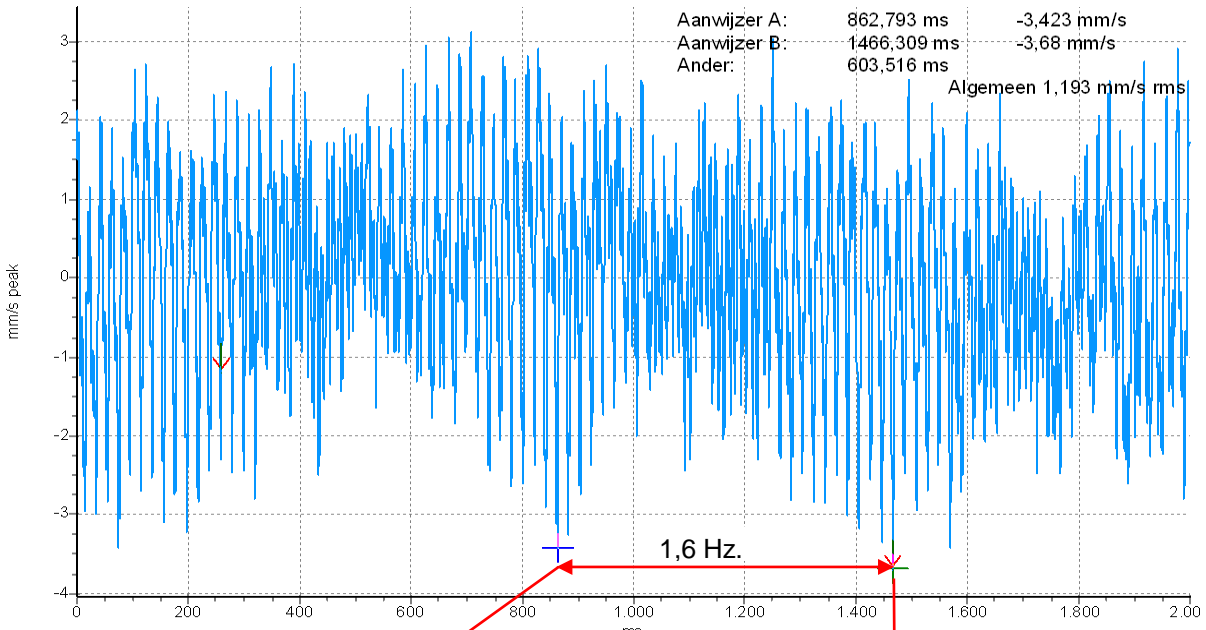


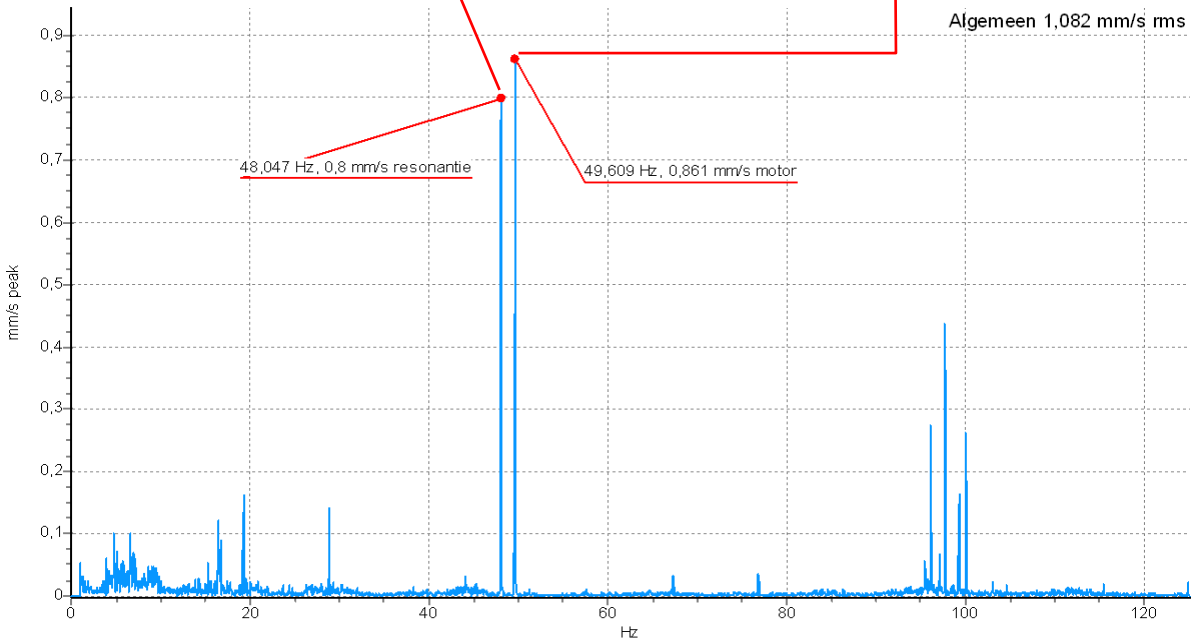


Bakoven 2 2005 - MAZ - Verticaal - Snelh Tijd 2000 ms
22-5-2006 8:57:39



22-5-2006 8:57:39 Algemeen 1,193 mm/s rms <stel TPM in>

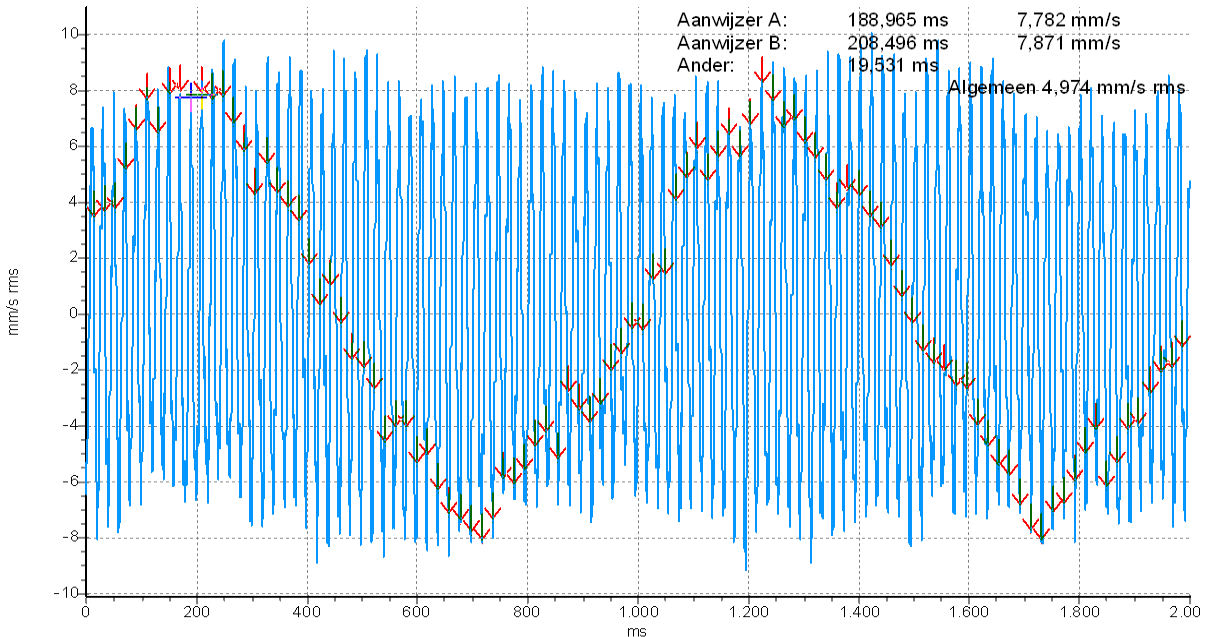
Bakoven 2 2005 - MAZ - Verticaal - Snelh Freq 125 Hz
22-5-2006 8:58:21



22-5-2006 8:58:21 Algemeen 1,082 mm/s rms <stel TPM in>

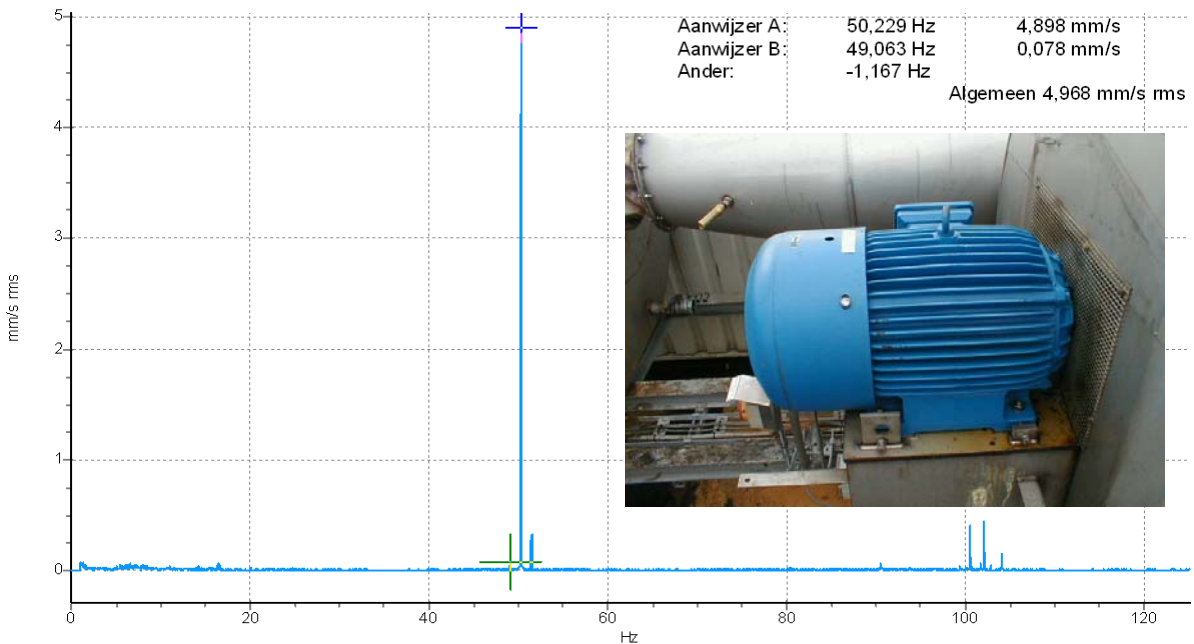


Bakoven 1 2010 - MAZ - Verticaal - Snelh Tijd 2000 ms
29-8-2005 12:17:33



29-8-2005 12:17:33 Algemeen 4,974 mm/s rms <stel TPM in>

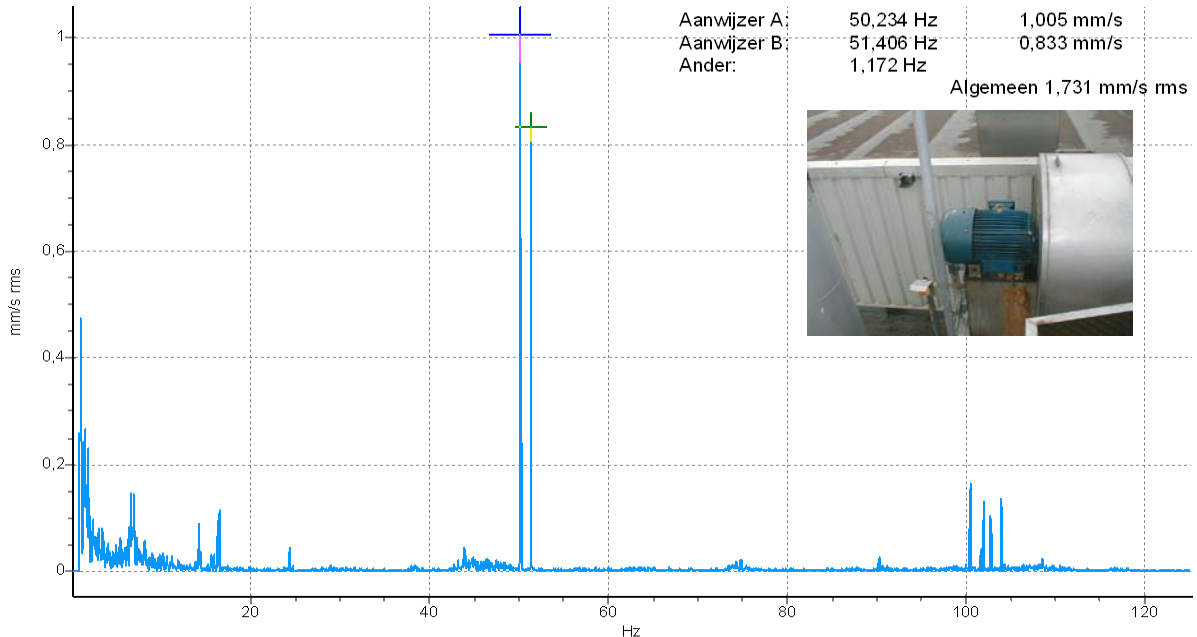
Bakoven 1 2010 - MAZ - Verticaal - Snelh Freq 125 Hz
29-8-2005 12:18:15



29-8-2005 12:18:15 Algemeen 4,968 mm/s rms <stel TPM in>

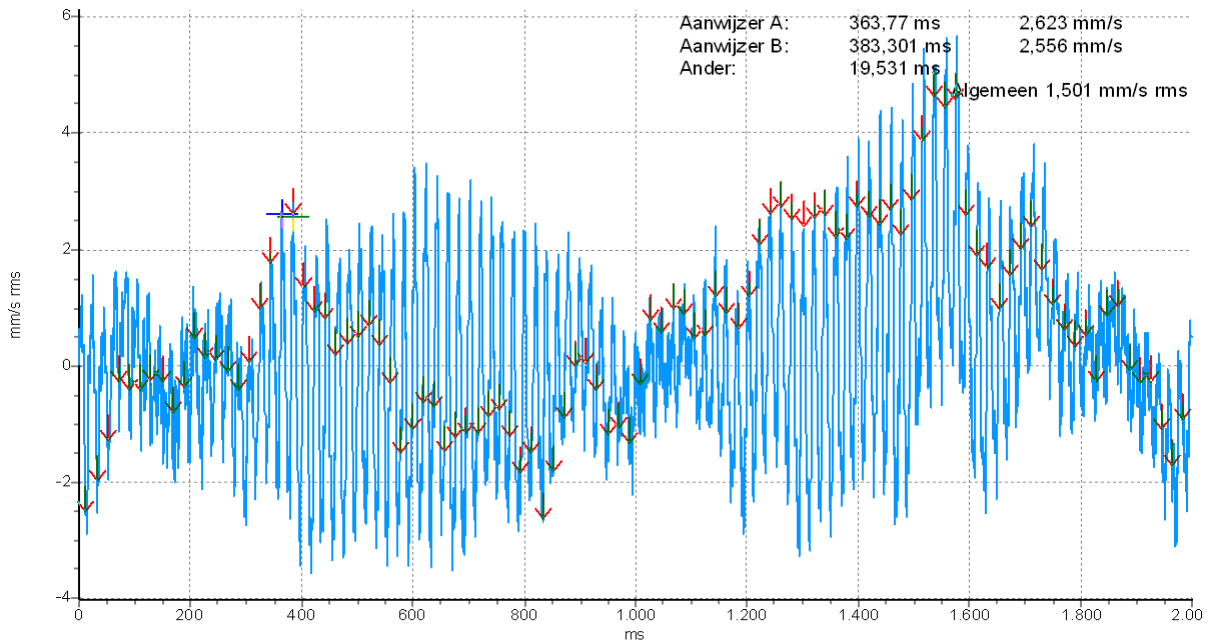


Bakoven 2 2005 - MAZ - Verticaal - Snelh Freq 125 Hz
29-8-2005 12:14:19



29-8-2005 12:14:19 Algemeen 1,731 mm/s rms <stel TPM in>

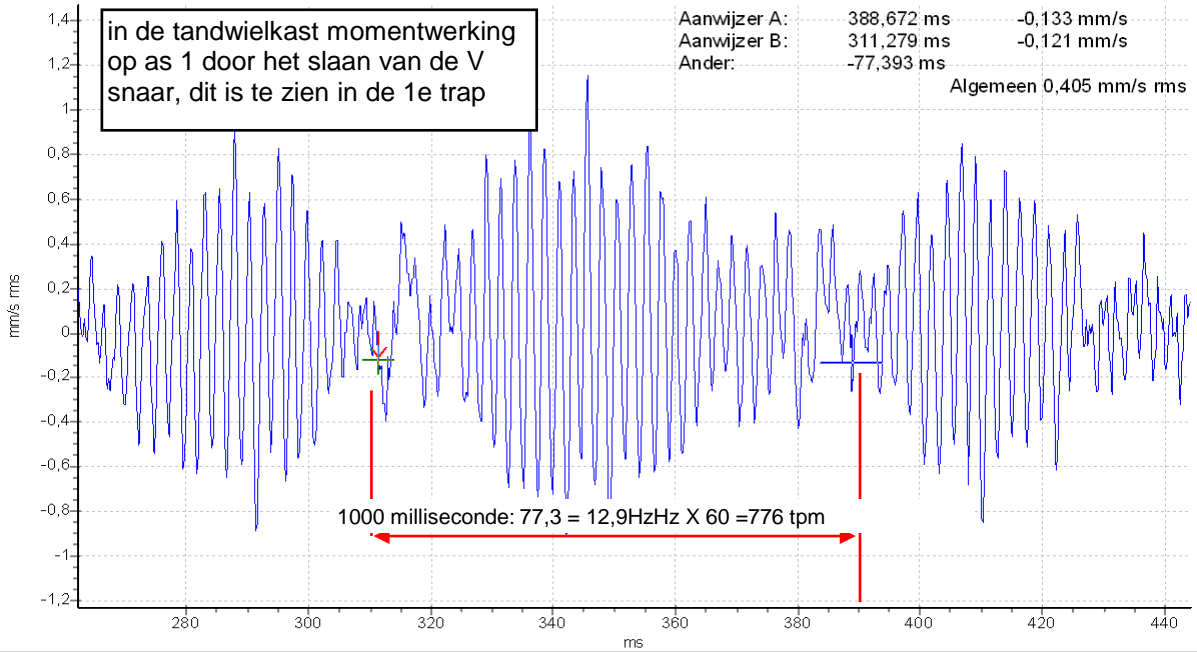
Bakoven 2 2005 - MAZ - Verticaal - Snelh Tijd 2000 ms
29-8-2005 12:13:37



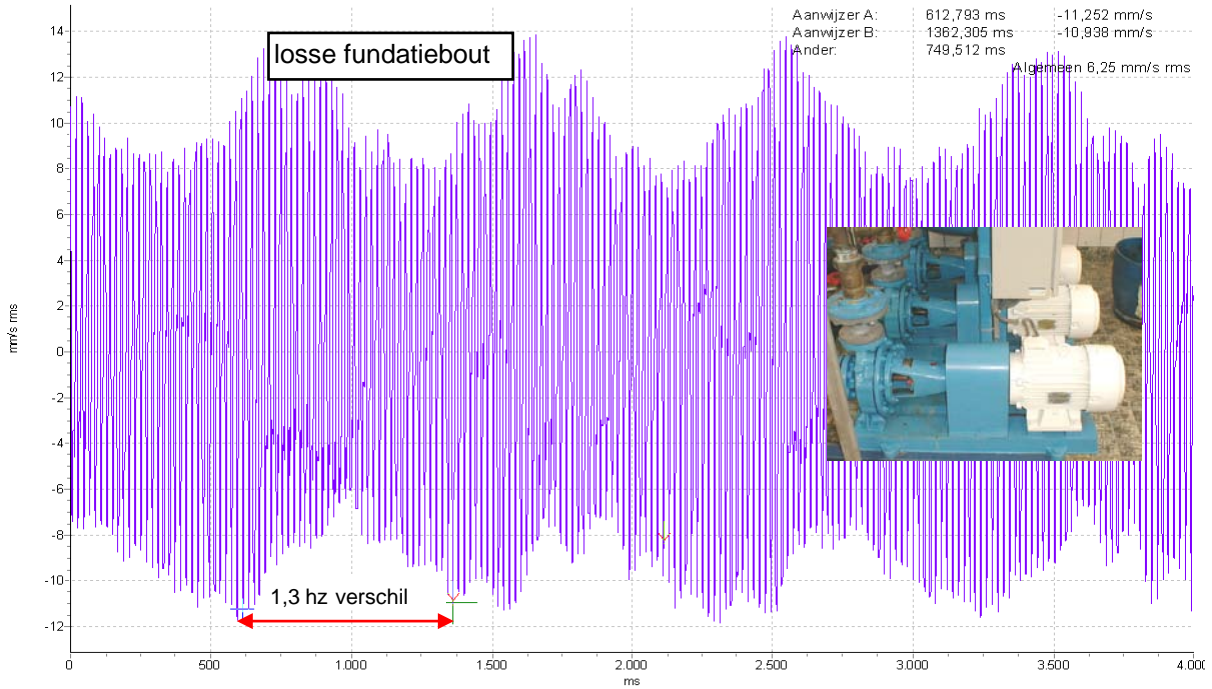
29-8-2005 12:13:37 Algemeen 1,501 mm/s rms <stel TPM in>



motor+3traps twk - As 2 AZ - Verticaal - Snelh Tijd 1000 ms
6-3-2003 14:46:55

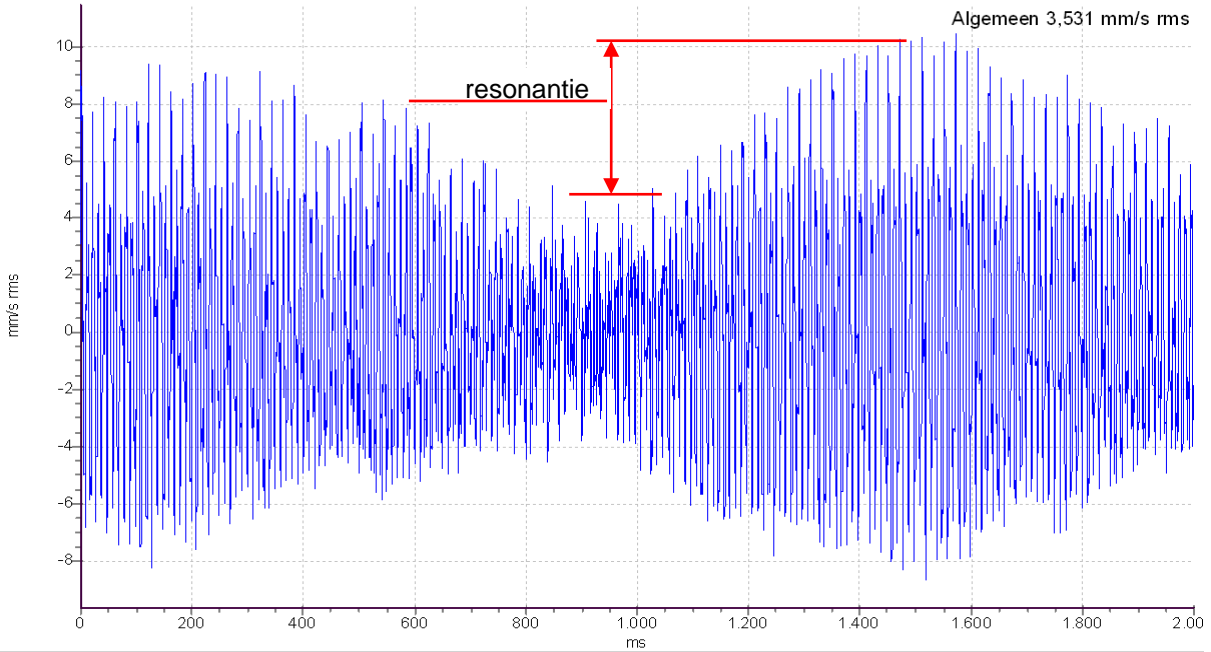


7103bedr wtr pmp - MWZ - Verticaal - Snelh Tijd 4000 ms
29-9-2003 14:03:48





compress 15 tm19 - M 19 - MAZ - Horizontaal - Snelh Tijd 2000 ms
4-6-2002 10:32:40



4-6-2002 10:32:40 Algemeen 3,531 mm/s rms <stel TPM in> <opmerking bijvoegen>

