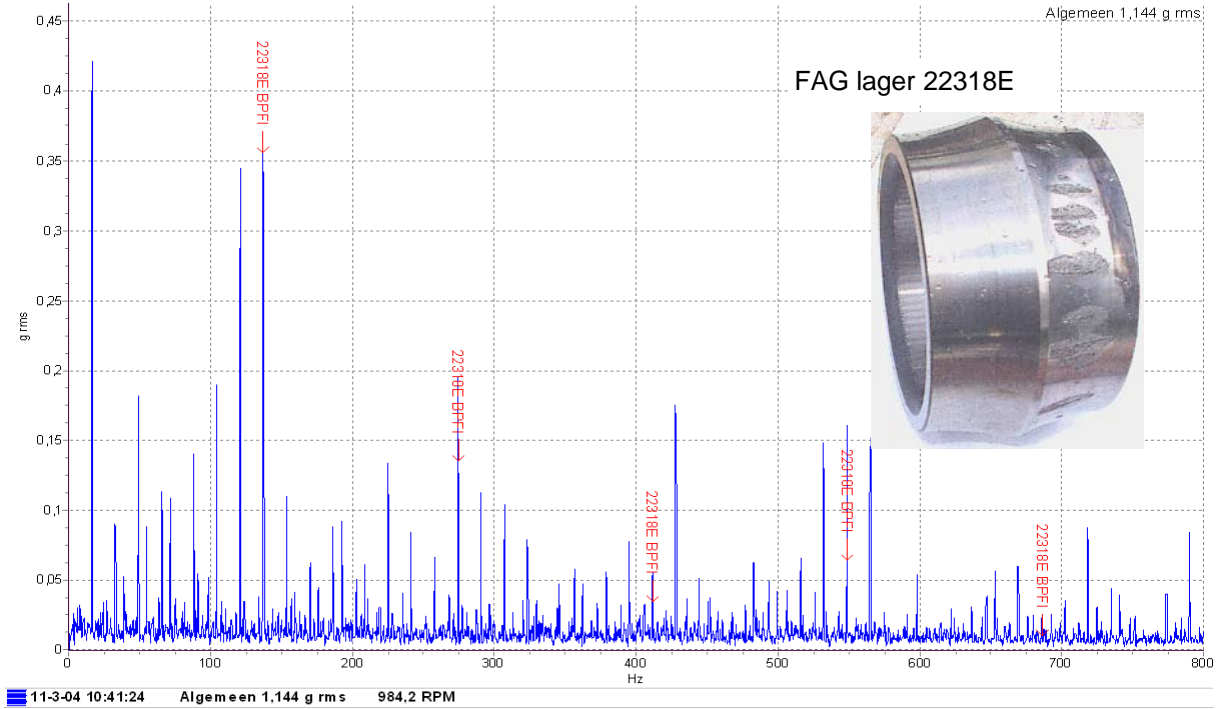
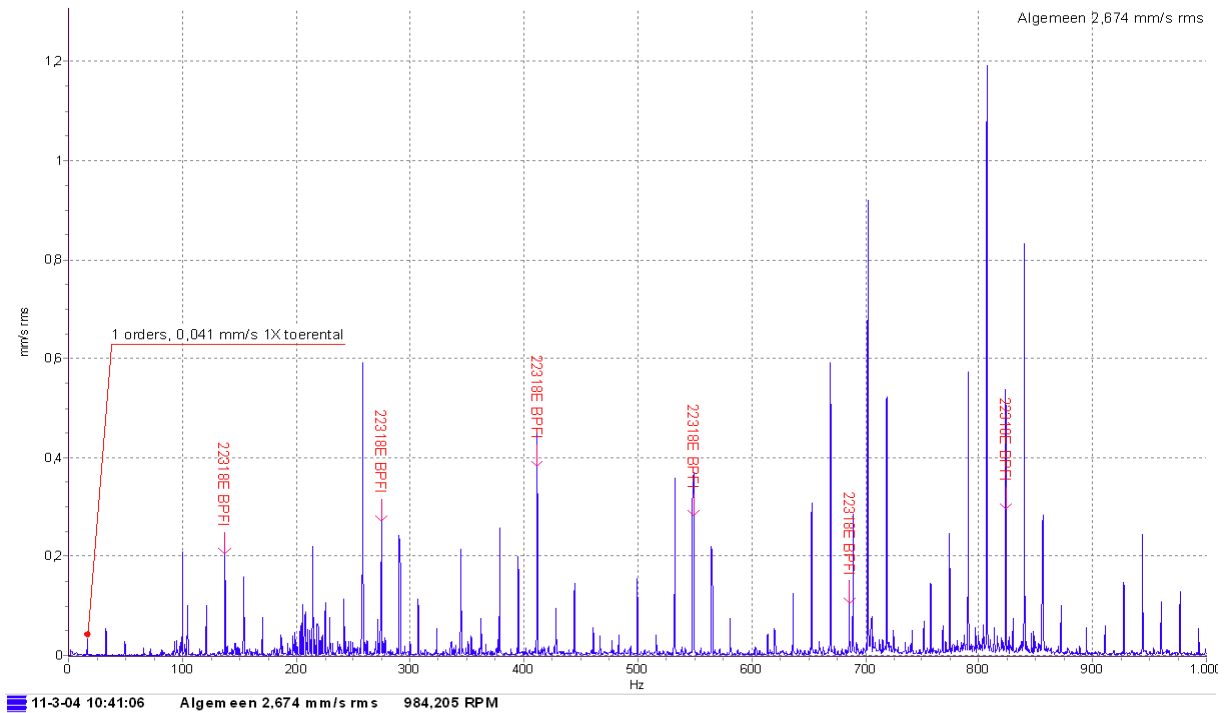




Pomp 2 - TWK as 1 WZ - Verticaal - Ontdoe Mod (2-10kHz) 800 Hz  
11-3-04 10:41:24

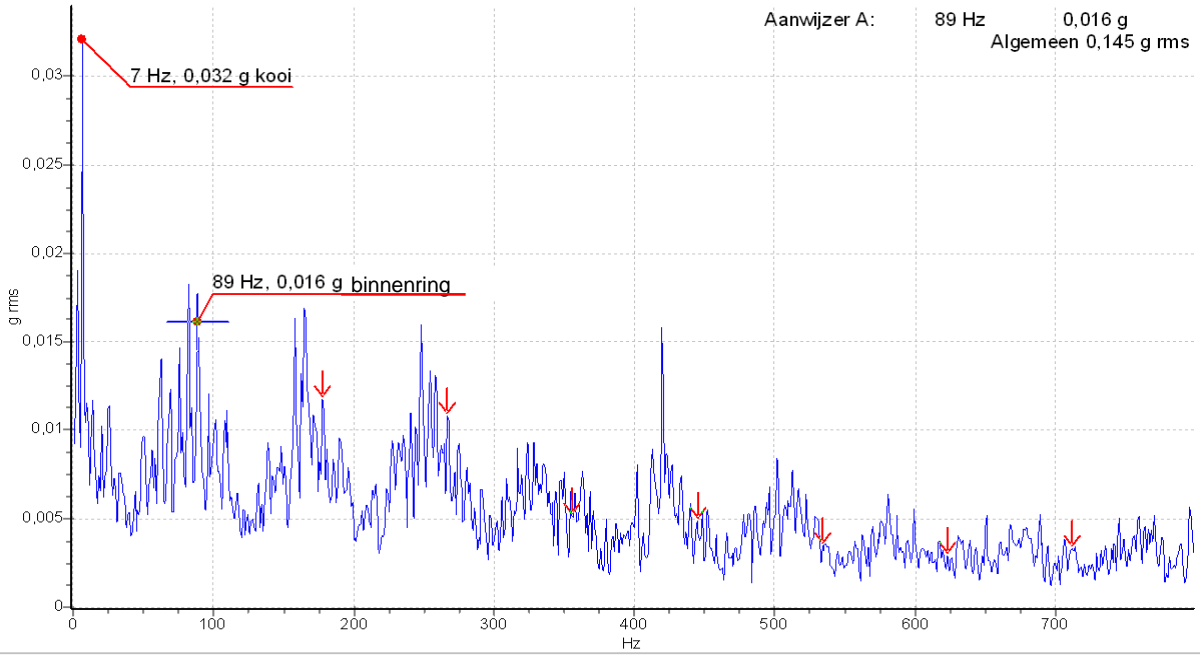


Pomp 2 - TWK as 1 WZ - Verticaal - Snel Freq 1000 Hz  
11-3-04 10:41:06

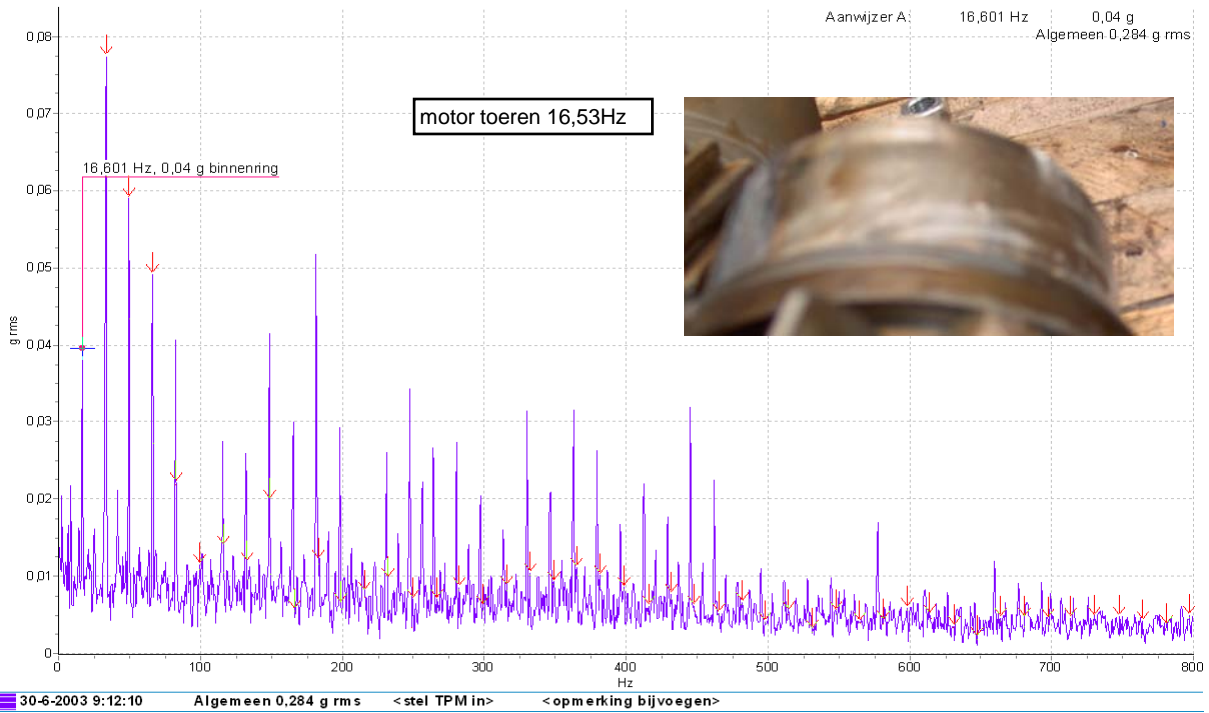




Buma Lemmer new - Buma Unit 2(280) - AS1WZ - Verticaal - Ontdoe Mod (2-10kHz) 800 Hz  
2-9-2002 10:43:13

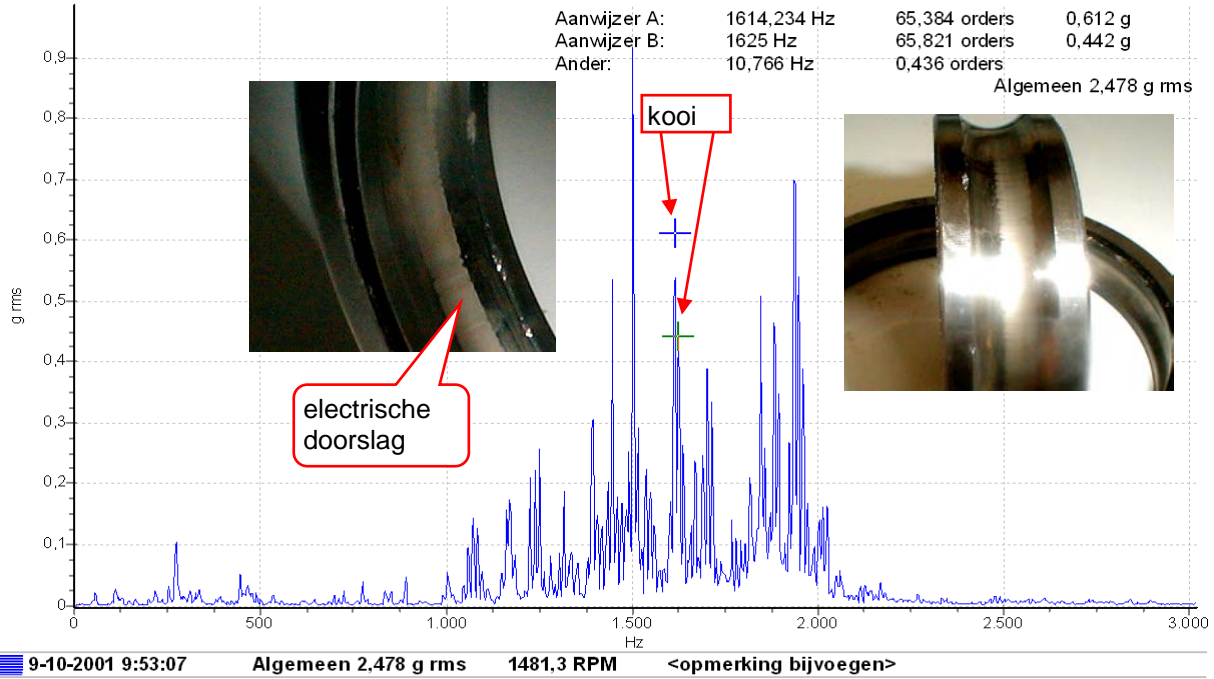


3 oud - As 3onder - Horizontal - Ontdoe Mod (2-10kHz) 800 Hz  
30-6-2003 9:12:10

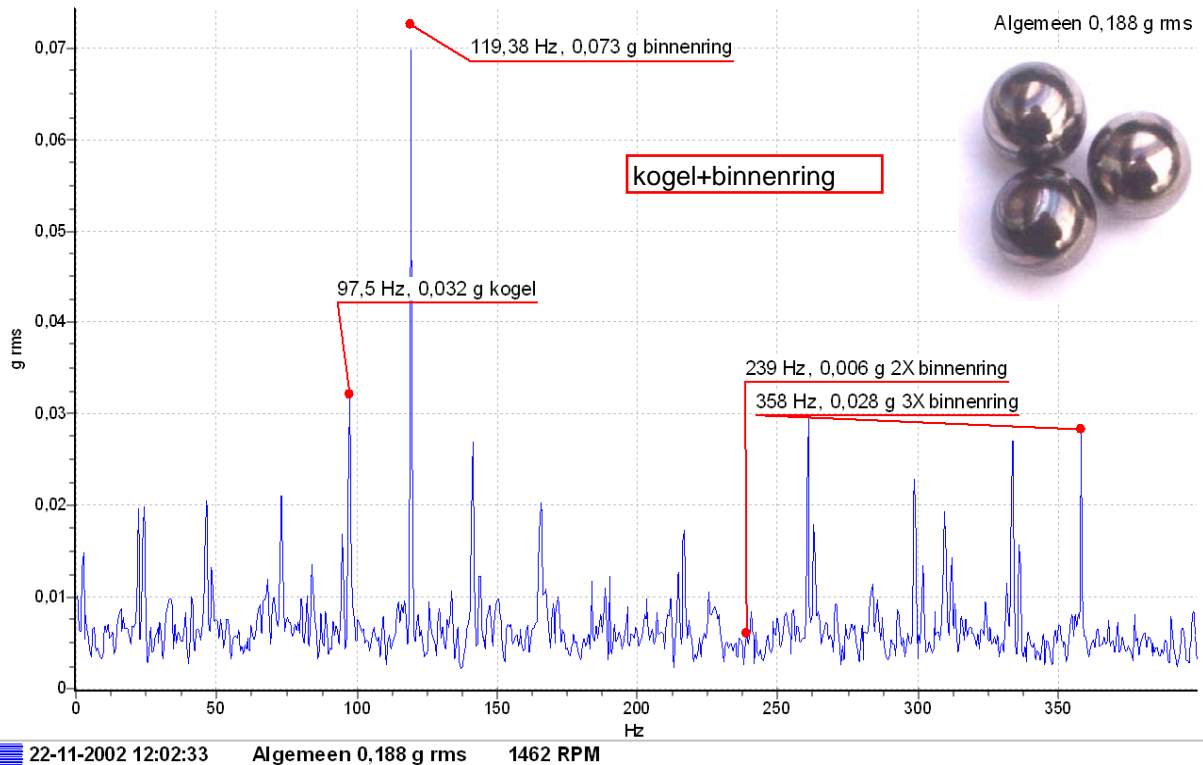




Blower 2 - MAZ - Verticaal - Versn Freq 5000 Hz  
9-10-2001 9:53:07



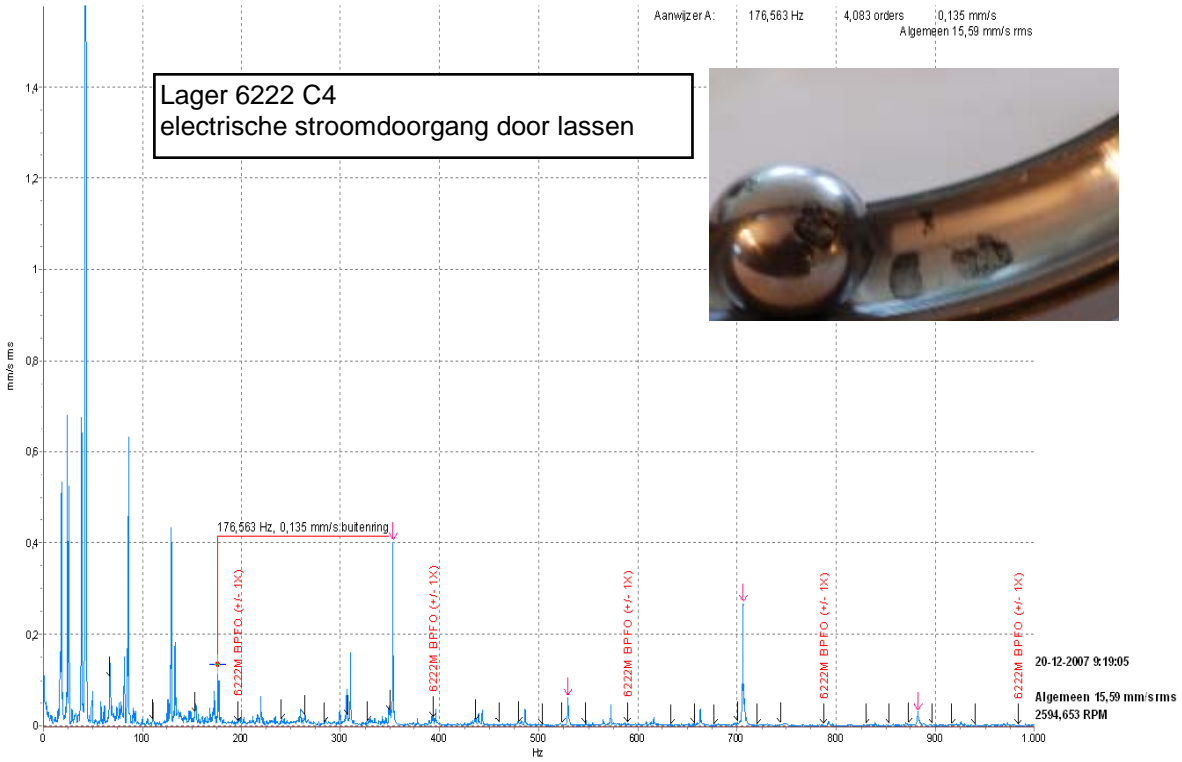
1434 Vijzel - MAZ - Verticaal - Ontdoe Mod (4-10kHz) 400 Hz  
22-11-2002 12:02:33



Dekanter 1 - Dekarter AZ - Verticaal - Snelh Freq 1000 Hz  
20-12-2007 9:19:05

Aanwijzer A: 176,563 Hz 4,083 orders 0,135 mm/s  
Algemeen 15,59 mm/s rms

Lager 6222 C4  
electrische stroomdoorgang door lussen



Pomp 3 - Pomp AZ - A3aal - Snelh Spec 125 Hz  
18-2-2009 12:04:57

Aanwijzer A: 6,172 Hz 0,025 mm/s  
Aanwijzer B: 6,133 Hz 0,024 mm/s  
Ander: -0,039 Hz -0,001 mm/s  
Algemeen 0,684 mm/s rms

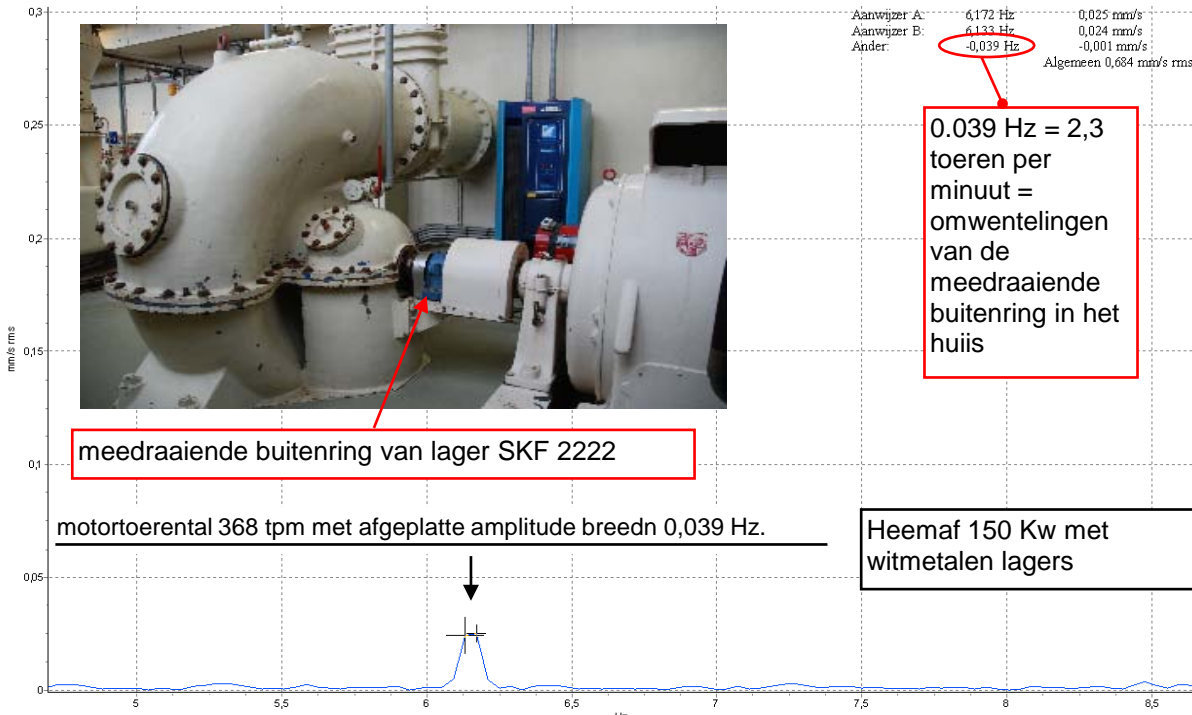


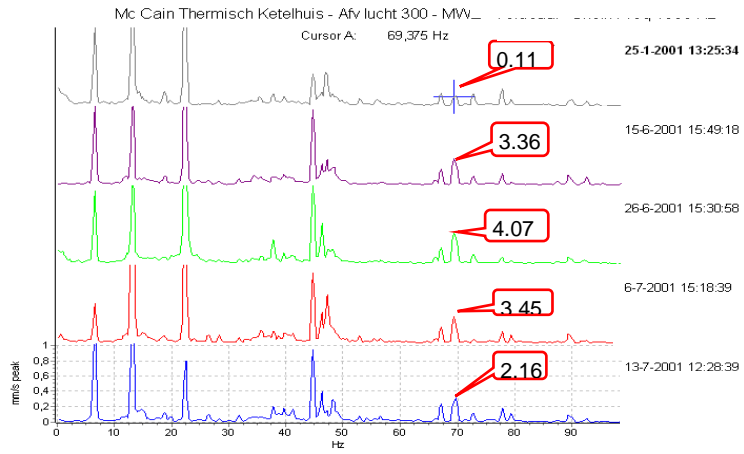
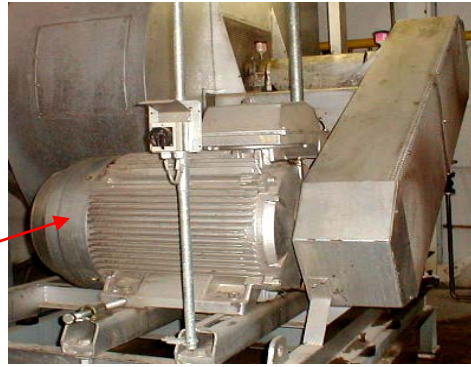
meedraaiende buitenring van lager SKF 2222

0.039 Hz = 2,3  
toeren per  
minuut =  
omwentelingen  
van de  
meedraaiende  
buitenring in het  
huis

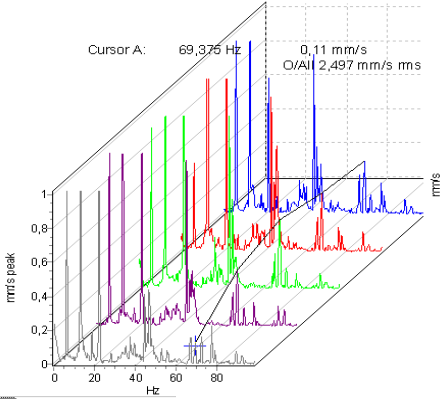
motortoerental 368 tpm met afgeplatte amplitude breedn 0,039 Hz.

Heemaf 150 Kw met  
witmetalen lagers

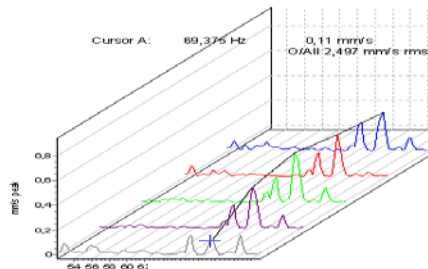




Mc Cain Thermisch Ketelhuis - Afv lucht 300 - MWZ - Verticaal - Snel Freq 1000 Hz



- 25-1-2001 13:25:34
- 15-6-2001 15:49:18
- 26-6-2001 15:30:58
- 6-7-2001 15:18:39
- 13-7-2001 12:28:39



- 25-1-2001 13:25:34
- 15-6-2001 15:49:18
- 26-6-2001 15:30:58
- 6-7-2001 15:18:39
- 13-7-2001 12:28:39





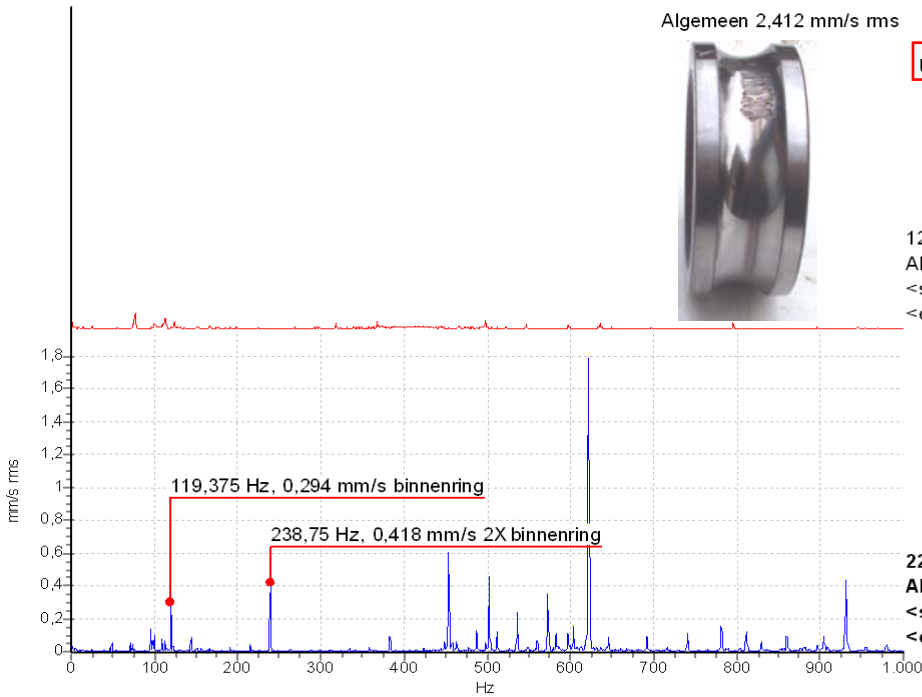
1434 Vijzel - MWZ - Verticaal - Snelh Freq 1000 Hz

Algemeen 2,412 mm/s rms

ultrasoon 75 dB



12-6-2002 13:42:57  
Algemeen 0,235 mm/s rms  
<stel TPM in>  
<opmerking bijvoegen>



22-11-2002 12:04:30  
Algemeen 2,412 mm/s rms  
<stel TPM in>  
<opmerking bijvoegen>

09.55.54 2003-01-24  
FI=Help

**ATLAS**  
**BRG BEARING MAP**

v1.0 (c) BRG  
(xxxxxx)

Bearing designation	:	6312
Pitch diameter [dm] (mm)	:	95
Rolling element diameter [DW] (mm)	:	22.22
Number of rolling elements [z]	:	8
Contact angle (degrees)	:	0.00
+ Inner ring speed (RPM)	:	1451.00
Bearing type code	:	1
Bearing type	:	Deep groove ball
Outer, housing, diameter [D] (mm)	:	130
Inner, bore, diameter [d] (mm)	:	60
Number of rows	:	1
Inner ring defect frequency (Hz)	:	119.36
Outer ring defect frequency (Hz)	:	74.11
Rolling element defect frequency (Hz)	:	97.74
Inner ring rotational speed (Hz)	:	24.18
Cage rotational speed (Hz)	:	9.26
Rolling element rotational speed (Hz)	:	48.87