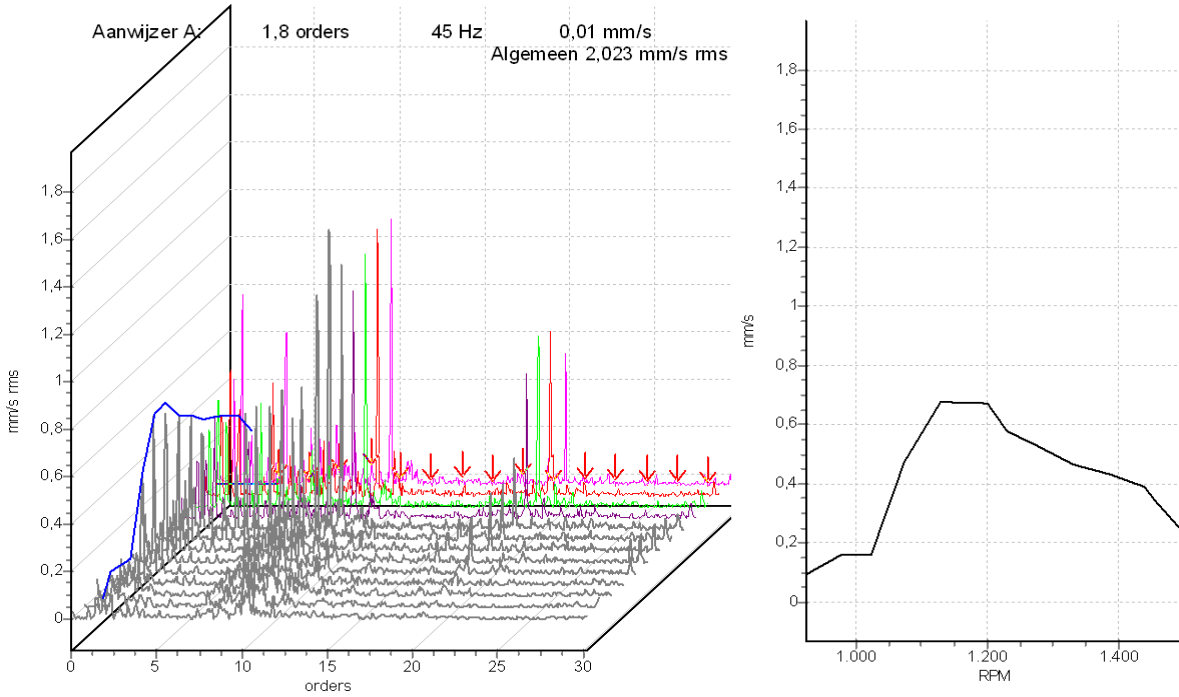
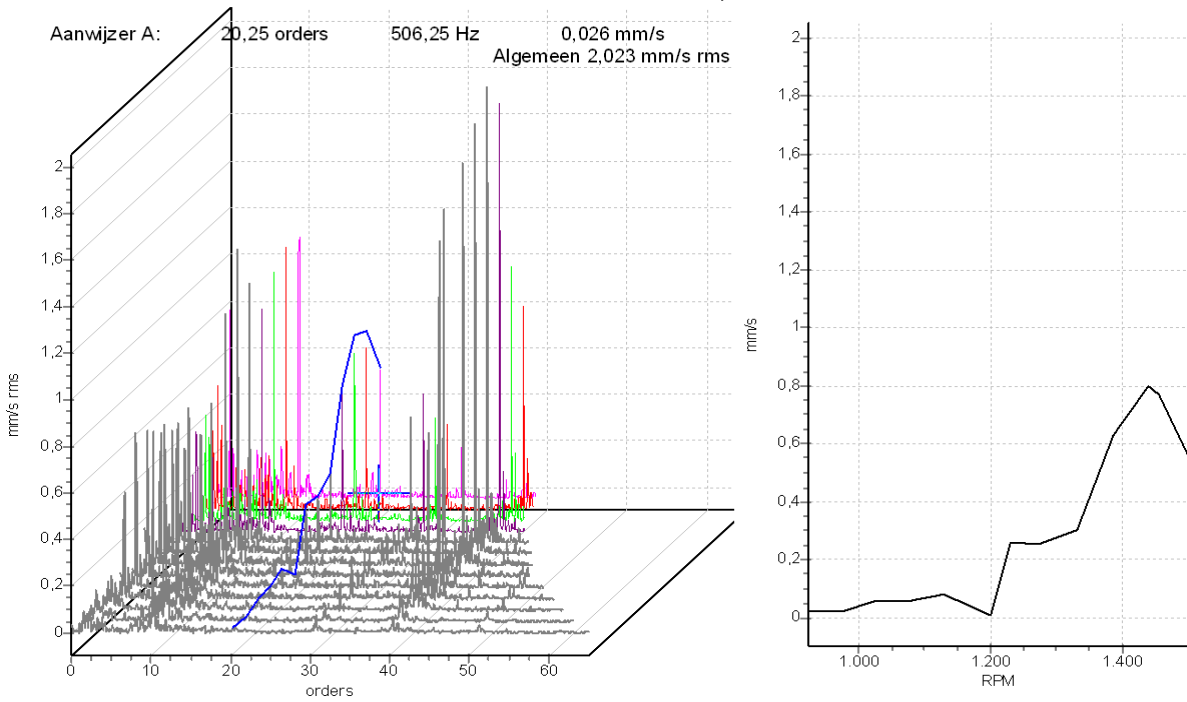




12 - 34 - Horizontaal - Snelh Freq 1000 Hz

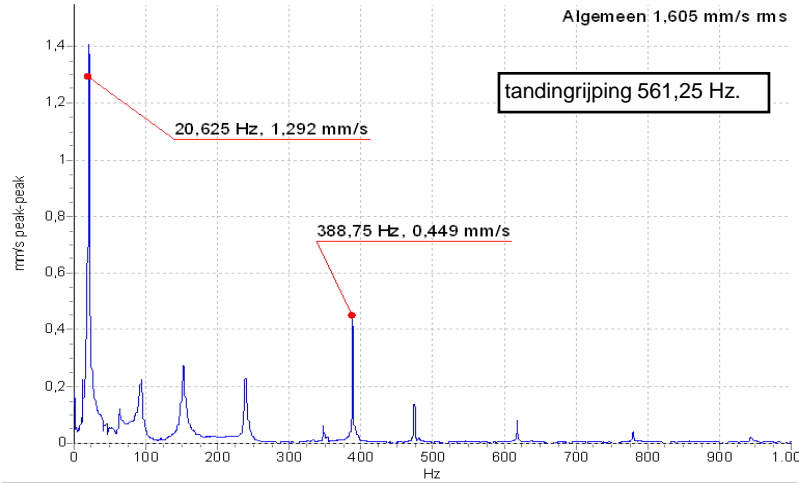


12 - 34 - Horizontaal - Snelh Freq 1000 Hz



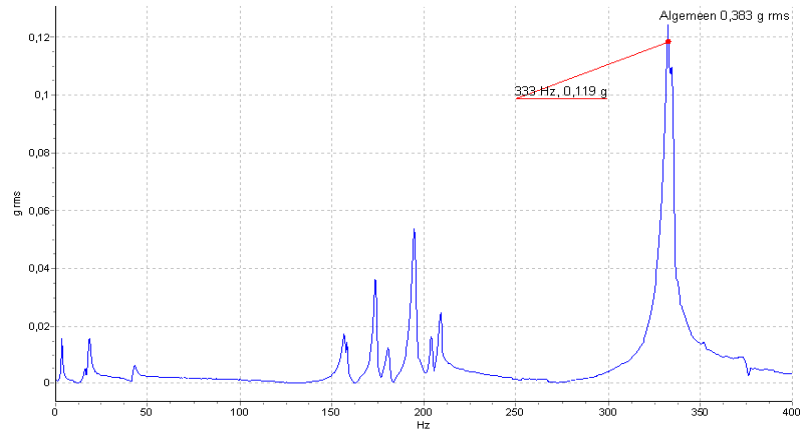
Bump test gemaal

umptest - schroefas - Snel Freq 1000 Hz
31-10-2001 14:14:06
Algemeen 1,605 mm/s rms



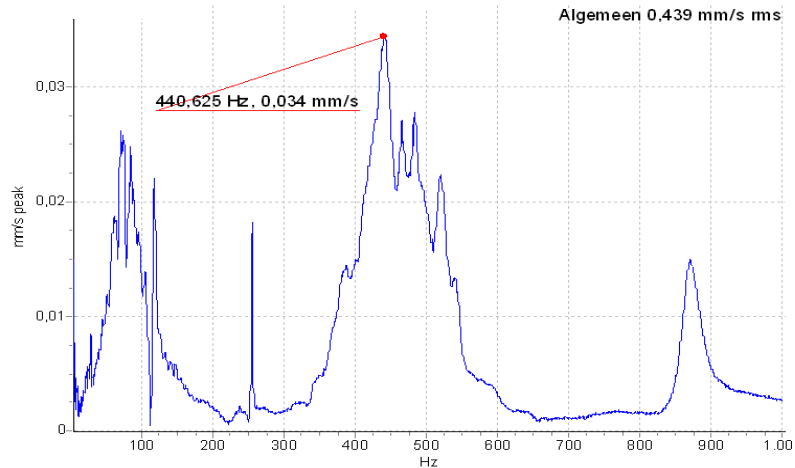
31-10-2001 14:14:06 Algemeen 1,605 mm/s rms <stel TPM in> <opmerking>

bump test schroef Versn Freq 400 Hz
31-10-2001 14:15:53



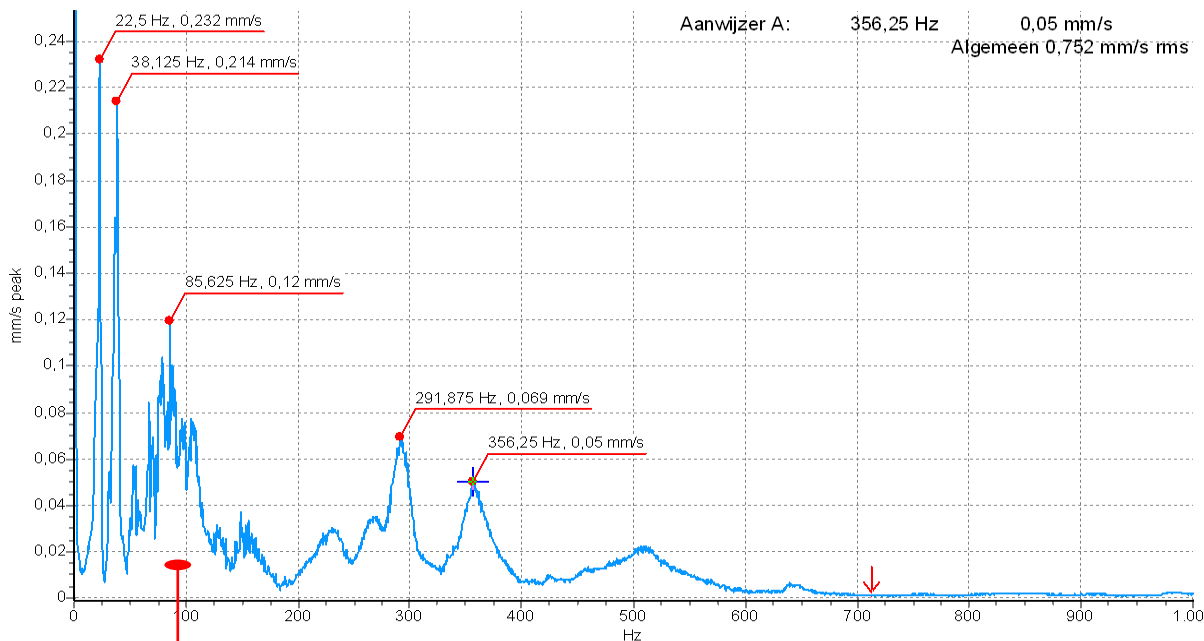
31-10-2001 14:15:53 Algemeen 0,383 g rms <stel TPM in> <opmerking bijvoegen>

kraggenburg - bump test - Motor 2 - Horizontaal - Snel Freq 1000 Hz
31-10-2001 14:17:54



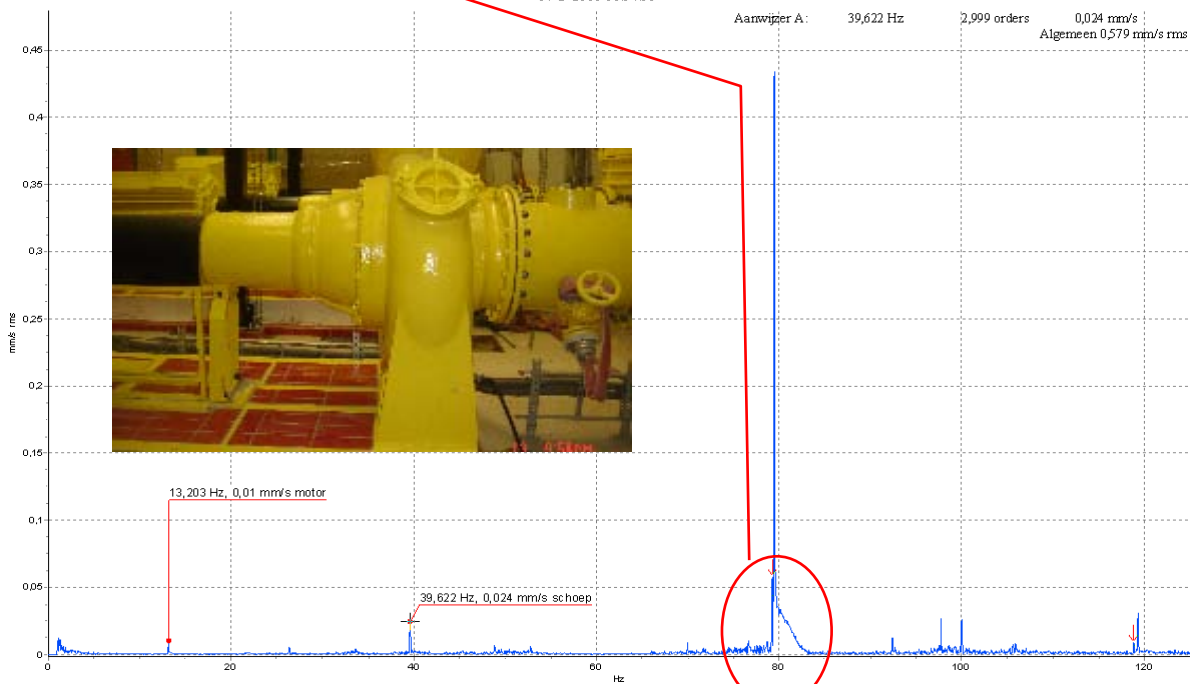
31-10-2001 14:17:54 Algemeen 0,439 mm/s rms <stel TPM in> <opmerking>

motor - MAZ - Verticaal - Snelh Freq 1000 Hz
30-3-2006 13:05:44



30-3-2006 13:05:44 Algemeen 0,752 mm/s rms

As 31 - MAZ - Verticaal - Snelh Spec 125 Hz
14-2-2006 10:54:55



14-2-2006 10:54:55 Algemeen 0,579 mm/s rms 792,736 RPM <opmerking bijvoegen>